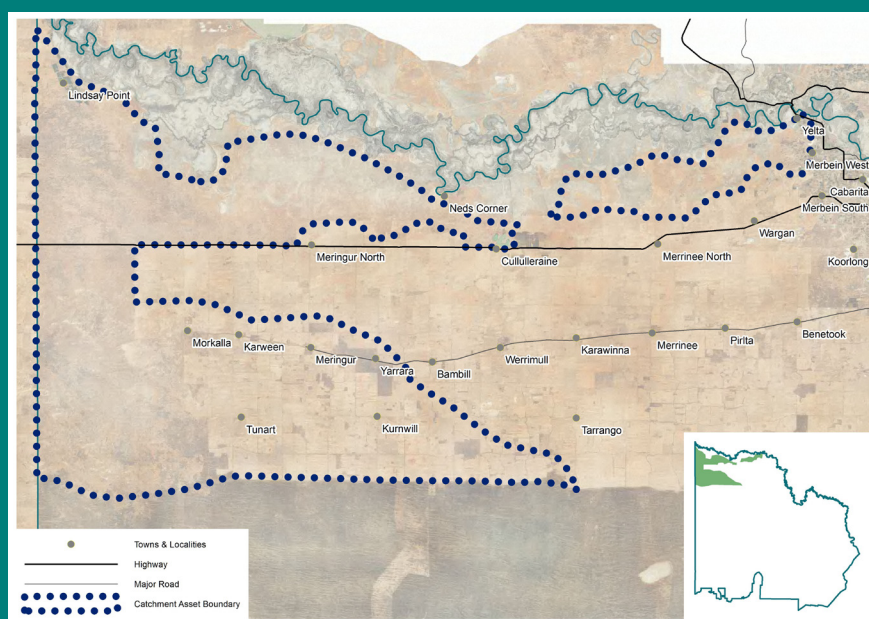


# 2 – North West Savannah Woodlands

## Regional Catchment Strategy Implementation Plan



This plan is a living document, which may be updated as required in light of new information or changing conditions. Whenever this document is revised, it will be uploaded to the Mallee CMA Website, replacing the old version.

To allow for ongoing review and renewal processes, some sections of the document may not be entirely complete at the time of publishing.

Publications produced by the Mallee Catchment Management Authority may be of assistance to you but the Mallee Catchment Management Authority and its employees do not guarantee that the publication is without flaw of any kind or is wholly appropriate for your particular purpose and therefore disclaims all liability for any error, loss or other consequence which may arise from you relying on any information in any Mallee Catchment Management Authority publication.

Version Control			
Version Number	Prepared by	Reviewed by	Date
1 (Presented on internal blog)	Sean Dwyer	Jo Latta	06/11/2013
2	Amy Leamon	Jo Latta	17/03/2017

© Mallee Catchment Management Authority 2017

# Contents

Section 1 - Overview .....	5
Catchment Asset Significance .....	6
Catchment Asset Value.....	6
Threatening Processes .....	6
Management Plans .....	7
Management Actions .....	7
Priorities .....	8
Regional Delivery Partners .....	10
Community NRM Groups .....	11
Section 2 – Regional Assets in this Catchment Asset .....	13
Rivers .....	14
Wetlands .....	15
Threatened Species and Communities.....	16
Terrestrial Habitat.....	22
Soils.....	25
Agricultural Land .....	26
Groundwater .....	27
Cultural Heritage .....	27
Community Capacity.....	28
Section 3 – Threatening Processes in this Catchment Asset.....	31
Land & water salinisation .....	32
Invasive Plants .....	35
Invasive Animals .....	37
Altered Hydrological Regimes.....	39
Soil Erosion .....	40
Inappropriate Water Use Practices .....	42
Recreational Pressures.....	43
Land Use Change .....	44
Direct Off-site Interactions.....	44
Misaligned Community Perceptions.....	45
Inappropriate Fire Regimes.....	45
Constrained Regenerative Capacity .....	47
Section 4 – References & Appendices .....	49
References.....	50
1. The Value of Regional Assets within a Catchment Asset.....	51
2. Categorising Threatening Processes .....	51
3. Management Plans Relevant to this Catchment Asset.....	52
4. Management Action Definitions .....	54
5. Management Actions from Existing Management Plans .....	55

6. Prioritising Potential Management Actions .....	59
7. Management Action Priorities .....	60

## Section 1 - Overview

## Catchment Asset Significance

Located adjacent to the Victoria-South Australia Border, this Catchment Asset includes the largest remnants of belah (Casuarina pauper) woodland in Victoria. Much of it lay within the Yarrara Flora and Fauna Reserve and the nearby Meringur and Mallanbool Reserves. This area provides high quality habitat for woodland birds (such as the White-browed Treecreeper) by virtue of the lack of historical disturbance (absence of stock grazing), their extent, and the maintenance of intact tree and shrub strata.

This Catchment Asset also includes the savannah woodlands that lay within Murray Sunset National Park, Wallpolla Island State Forest and Ned's Corner, a historic former pastoral property owned and managed by Trust for Nature.

The area supports a large number of threatened floral species including the Erect Pepper-Cress, which is vulnerable Australia wide.

## Catchment Asset Value

This section examines the relative values of the Regional Assets that lie within this Catchment Asset. It provides an overview of the asset analysis in order to inform prioritisation of management actions that are intended to minimise the impact of the threatening processes upon Regional Assets and improve the status or quality of the Regional Assets within the Catchment Asset Area.

The asset value indicates the relative importance of the Regional Asset within the Catchment Asset Area. The valuation is determined from a range of indicators, many specific to each of the Regional Assets that describe the importance of the Asset relative to social, economic and environmental values.

Table 1 below provides a summary of the value of each of the Regional Assets in this Catchment Asset. Greater detail about each of the Regional Assets in this Catchment Asset can be found in Section 2 – Regional Assets in this Catchment Asset

**Table 1: Value of Regional Assets in this Catchment Asset**

Regional Asset	Value
Rivers	<b>MEDIUM</b>
Wetlands	<b>LOW</b>
Threatened Species and Communities	<b>HIGH</b>
Terrestrial Habitat	<b>HIGH</b>
Soils	<b>HIGH</b>
Agricultural Land	<b>HIGH</b>
Groundwater	<b>NONE</b>
Cultural Heritage	<b>HIGH</b>
Community Capacity	<b>HIGH</b>

A detailed explanation of how these values were defined and applied can be found in Appendix 1. The Value of Regional Assets within a Catchment Asset.

## Threatening Processes

This section examines the threatening processes that may be impacting upon Regional Assets that lie within this Catchment Asset. It provides an overview of each of the threatening processes in order to inform prioritisation of management actions that are intended to minimise their impact upon Regional Assets and improve the status or quality of the Regional Assets within the Catchment Asset Area.

Table 2 below provides a summary of the threat level posed by each of the threatening processes that are active in this Catchment Asset. Greater detail about each of the threatening processes and their scope, scale and relative impact within this Catchment Asset can be found in Section 3 – Threatening Processes in this Catchment Asset.

**Table 2: Threat Priority across this Catchment Asset**

Threatening Process	Priority of Action
Land & Water Salinisation	MEDIUM
Invasive Plants	HIGH
Invasive Animals	HIGH
Altered Hydrological Regimes	HIGH
Soil Erosion	HIGH
Inappropriate Water Use Practices	MEDIUM
Recreational Pressures	MEDIUM
Land Use Change	HIGH
Direct off-site interactions	LOW
Misaligned community perceptions	MEDIUM
Inappropriate fire regimes	MEDIUM
Constrained regenerative capacity	HIGH

A detailed explanation of how these threat levels were defined and applied can be found in Appendix 2. Categorising Threatening Processes.

## Management Plans

This Catchment Asset Area is subject to a diverse range of natural resource management instruments that are intended to protect, preserve and enhance the area's natural resources for the benefit of the Mallee region. These instruments can be either broad in their focus (covering many regional assets), focused on a particular area of interest (such as an individual Regional Asset) or tightly focused on a specific location or species. These management plans are prepared and owned by range of entities such as local government, statutory authorities, community groups and government departments at both State and Federal levels. Responsibility for their implementation can rest with a single entity or it may be divested across a broad range of organisations and groups. Some management plans are prepared to satisfy a legislative requirement while others are prepared to provide direction towards an organisational goal. Regardless of the reason and purpose of the management plan, they all have a common feature – they typically contain specific management direction or actions that are to be delivered through the implementation of the plan.

The identified existing management plans have been listed in Appendix 3. *Management Plans Relevant to this Catchment Asset*

## Management Actions

Actions within the management plans in the table above are typically diverse in their wording, structure and complexity. However, they are broadly similar in terms of their intent. As a result, they can usually be easily classified into broad categories. Within each of these categories are a range of common management actions. Each of these common management actions can also be said to target specific threatening processes. These management categories, the management actions within

each of them, their definitions and the targeted threatening processes are shown in Appendix 4. *Management Action Definitions*

The result of the classification process of the actions within Appendix 3. Management Plans Relevant to this Catchment Asset is contained in Appendix 5. Management Actions from Existing Management Plans. The classification table includes some detail about each action to support the classification. It is advised that if more information about a specific management action within a management plan is required then the original management plan should be consulted rather than relying specifically on the data in that classification table.

## Priorities

This section examines the potential management action groups from the management plans relevant to this Catchment Asset Area that are listed in the Management Plans section above and summarised Appendix 5. Management Actions from Existing Management Plans. The intent is to prioritise these potential management actions in terms of:

- the priority of the regional asset within the catchment asset area (outlined in the Catchment Asset Value section above);
- the priority to address a threatening process (outlined in the Threatening Processes section above);
- the capacity of the management action to address the threatening process; and
- the level of investment (in both of time and money) required to exercise that capacity.

The individual management actions from the plans listed in the Management Plans section were grouped and scored by consensus against agreed criteria and then each potential management action group within the Catchment Asset was assigned to a category that defines the prospective priority to the implementation. Further information regarding the definition and application of each of these categories can be found in Appendix 6. *Prioritising Potential Management Actions*.

The findings of the analysis are summarised in Table 3 below. The detailed priority matrices from which the summary table is taken can be found in Appendix 7. Management Action Priorities.

**Table 3: Summary of the Priority of Potential Management Actions**

Management Action	Priority	Threatening Processes Addressed
Pest Plant Control	High	Invasive Plants; Constrained Regenerative Capacity
Pest Animal Control	High	Invasive Animals; Soil Erosion; Constrained Regenerative Capacity
Habitat Protection	Medium	Invasive Animals; Soil Erosion; Recreational Pressure; Land Use Change; Direct Off-Site Interactions; Constrained Regenerative Capacity
Habitat Restoration	Medium	Land & Water Salinisation; Soil Erosion; Recreational Pressure; Direct Off-Site Interactions; Constrained Regenerative Capacity
Revegetation	Low	Land & Water Salinisation; Soil Erosion; Recreational Pressure; Direct Off-Site Interactions; Constrained Regenerative Capacity
Environmental Watering	High	Altered Hydrological Regimes; Constrained Regenerative Capacity
Soil Erosion Control	Medium	Soil Erosion



Threatened Species Interventions	High	Constrained Regenerative Capacity
Enhancing Land Management Regimes	High	Land & Water Salinisation; Soil Erosion; Inappropriate Water Use Practises; Land Use Change; Direct Off-Site Interactions
Supporting Human Capacity for NRM	Medium	Land & Water Salinisation; Invasive Plants; Invasive Animals; Altered Hydrological Regimes; Soil Erosion; Inappropriate Water Use Practices; Recreational Pressures; Land Use Change; Direct Off-site Interactions; Misaligned Community Perceptions; Inappropriate Fire Regimes; Constrained Regenerative Capacity
Supporting Institutional Capacity for NRM	Medium	Land & Water Salinisation; Invasive Plants; Invasive Animals; Altered Hydrological Regimes; Soil Erosion; Inappropriate Water Use Practices; Recreational Pressures; Land Use Change; Direct Off-site Interactions; Misaligned Community Perceptions; Inappropriate Fire Regimes; Constrained Regenerative Capacity
Supporting Social Capacity for NRM	Low	Land & Water Salinisation; Invasive Plants; Invasive Animals; Altered Hydrological Regimes; Soil Erosion; Inappropriate Water Use Practices; Recreational Pressures; Land Use Change; Direct Off-site Interactions; Misaligned Community Perceptions; Inappropriate Fire Regimes; Constrained Regenerative Capacity
Institutional Planning for NRM	Medium	Land & Water Salinisation; Invasive Plants; Invasive Animals; Altered Hydrological Regimes; Soil Erosion; Inappropriate Water Use Practices; Recreational Pressures; Land Use Change; Direct Off-site Interactions; Misaligned Community Perceptions; Inappropriate Fire Regimes; Constrained Regenerative Capacity
Community Driven Planning for NRM	Medium	Land & Water Salinisation; Invasive Plants; Invasive Animals; Altered Hydrological Regimes; Soil Erosion; Inappropriate Water Use Practices; Recreational Pressures; Land Use Change; Direct Off-site Interactions; Misaligned Community Perceptions; Inappropriate Fire Regimes; Constrained Regenerative Capacity
Landholder Driven Planning for NRM	Medium	Land & Water Salinisation; Invasive Plants; Invasive Animals; Altered Hydrological Regimes; Soil Erosion; Inappropriate Water Use Practices; Recreational Pressures; Land Use Change; Direct Off-site Interactions; Misaligned Community Perceptions; Inappropriate Fire Regimes; Constrained Regenerative Capacity

Research to improve knowledge	Medium	Land & Water Salinisation; Invasive Plants; Invasive Animals; Altered Hydrological Regimes; Soil Erosion; Inappropriate Water Use Practices; Recreational Pressures; Land Use Change; Direct Off-site Interactions; Misaligned Community Perceptions; Inappropriate Fire Regimes; Constrained Regenerative Capacity
Asset condition monitoring and assessment	Medium	Land & Water Salinisation; Invasive Plants; Invasive Animals; Altered Hydrological Regimes; Soil Erosion; Inappropriate Water Use Practices; Recreational Pressures; Land Use Change; Direct Off-site Interactions; Misaligned Community Perceptions; Inappropriate Fire Regimes; Constrained Regenerative Capacity

## Regional Delivery Partners

The individuals and organisations listed below have various roles to play within the Catchment Asset area in delivering and implementing the management actions described in previous sections that will in turn contribute to the aims and expected outcomes of the Mallee RCS. This list is not considered exhaustive and can be expected to change over time. More detail about the specific role and responsibilities of these entities with respect to the RCS can be found below.

- Aboriginal Affairs Victoria
- Aboriginal Communities (Traditional Owners & Organisations)
- Birdlife Mildura
- Border Groundwaters Agreement Review Committee
- Crown Frontage Licence Holders
- Department of Environment, Water and Natural Resources (SA)
- Department of Environment and Primary Industries (VIC)
- Far West Anglers Association
- Lower Murray Water
- Mallee Catchment Management Authority
- Mildura RSL Angling Club
- Mildura Rural City Council
- Millewa-Carwarp Landcare Group
- Murray Darling Basin Authority
- Murray Lower Darling Rivers Indigenous Nations
- NSW Department of Primary Industries - Office of Water; Catchments & Lands; Fisheries
- NSW Office of Environment & Heritage
- NSW Transport & Maritime
- Parks Victoria
- Private Land Managers
- Regional Development Australia Loddon Mallee
- Research Bodies – Arthur Rylah Institute, Invasive Animals CRC, Murray Darling Freshwater Research Centre
- South Australian Murray-Darling Basin Natural Resource Management Board
- Trust For Nature
- VicRoads
- Waterwatch
- Yelta Landcare Group

## Community NRM Groups

This section provides a summary of these stakeholder groups that are active within this Catchment Asset. This is not an exhaustive list and will be updated on a regular basis. Further detail on the community NRM groups can be found in Attachment 1 – Mallee NRM Interest Groups.

### Landcare Groups

The Landcare movement has been active in the Mallee since the late 1980s, with 23 active Landcare groups operating today. From our first group, Millewa-Carwarp (established 1989), to the newest, Cabarita (established 2012), Landcare has been instrumental in harnessing and promoting the interests of local communities in natural resource management.

Many groups initially formed due to the issues of rabbits and weeds. Salinity, soil conservation and biodiversity issues have evolved and continued to propel the Landcare movement into the 21st century. Our Landcare groups are keen to ensure that the legacy of Landcare continues and actively support a range of Junior Landcare Groups activities across the region.

#### **Northern Mallee Landcare Consortium**

The Northern Mallee Landcare Consortium represents the Millewa-Carwarp, Yelta, Cabarita, Red Cliffs and Kulkyn Way Landcare Groups

- Millewa-Carwarp
- Yelta

#### **Non-aligned Landcare Groups**

- Cabarita

### Other Groups

There are a broad range of community, industry, indigenous and specialist groups that have a role to play in NRM within this catchment asset. The tables in this section provide a listing of the groups currently known to be active within the asset area.

Traditional owner groups provide opportunities for our local indigenous communities to have input into how the regions landscapes are managed; and to enhance regional awareness of the cultural values inherent within these landscapes.

A wide range of special interest groups provide the means for individuals to become engaged in activities and programs which reflect their particular concerns. They also provide the region with a vital source of knowledge and understanding on specific issues.

The region's industry based groups have an important role in developing and promoting best practice for competitive and sustainable agricultural sectors.

Advisory groups to statutory bodies like CMA's and water authorities are important forums for both the community and the authorities involved. These groups provide management advice and community feedback to the convening authority while at the same time communicating with the wider community about the activities of the advisory group and the organisation in general.

#### **Registered Aboriginal Parties**

There is currently no registered aboriginal party determined for this catchment asset area

#### **Special Interest and Recreational Groups**

- BirdLife Mildura
- Murray Darling Association
- Murray Lower Darling Rivers Indigenous Nations
- Waterwatch

#### **Industry Groups**

- National Gypsum Miners Association (NGMA)
- Victorian Farmers Federation (VFF)

- Victoria No-Till Farmers Association (VNTFA)
- Australian Table Grape Association Inc (ATGA)
- Dried Fruits Australia (DFA)
- Mallee Sustainable Farming Inc (MSF)
- Murray Valley Citrus Board (MVCB)
- Murray Valley Winegrowers' Inc (MVW)
- Pistachio Growers Association Incorporated (PGAI)
- Sunraysia Branch of the Victorian Apiarists Association
- Sunraysia Citrus Growers Inc (SCG)

#### **Advisory Groups**

- Aboriginal Reference Group (ARG)
- Mallee CMA Land and Water Advisory Committee (LWAC)
- Mallee CMA Technical Advisory Committees (TACs)
- Lower Murray Water Customer Service Advisory Committees (Rural)
- Goulburn-Murray Water Services Committees (WSCs)
- The Living Murray (TLM) Icon Site Community Reference Groups

## Section 2 – Regional Assets in this Catchment Asset

Regional Assets in the Mallee NRM region were defined and applied in accordance with guidelines provided by DSE to support the Victorian Catchment Management Council RCS Guidelines. Each of the following sub-sections provides a background to these Regional Assets and the available information about their significance within this Catchment Asset. This follows on to an assessment of the relative value of the Regional Asset based on the criteria contained in Appendix 1. *The Value of Regional Assets within a Catchment Asset*

## Rivers

There are few natural waterways to be found within this Catchment Asset. The Mallee Waterway Strategy (2014-22) identifies priority reaches for future management using an Asset Based Approach; facilitating targeted planning and implementation processes to deliver greatest social, cultural and economic returns on our efforts. Each River asset occurring within this Catchment Asset is ascribed a priority of 'high', 'medium', 'low', or 'additional' under this framework.

Based on the available data concerning their extent, quality and policy significance within this landscape, the Rivers within this Catchment Asset are considered to be of **medium** value.

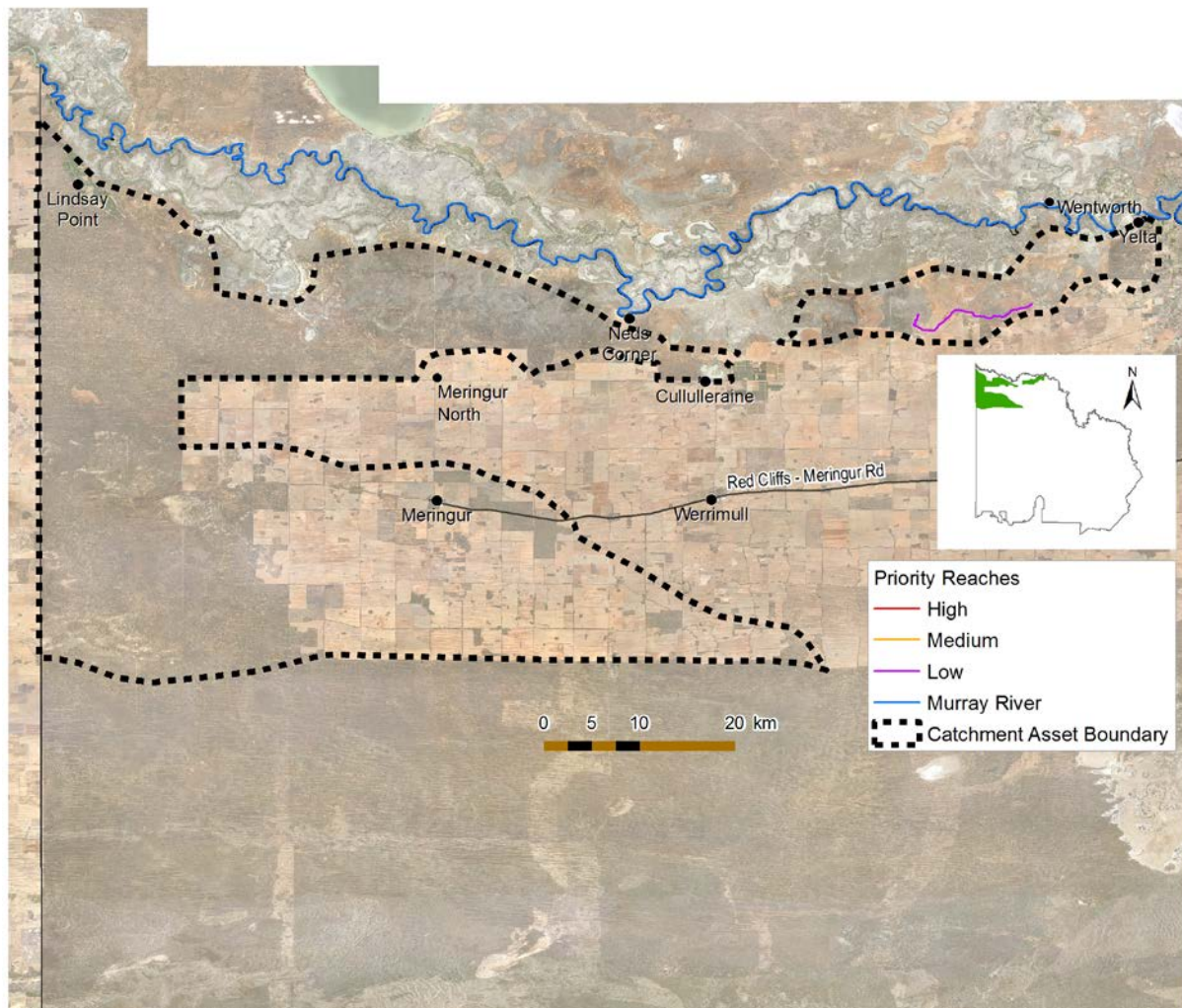


Figure 1: River reaches

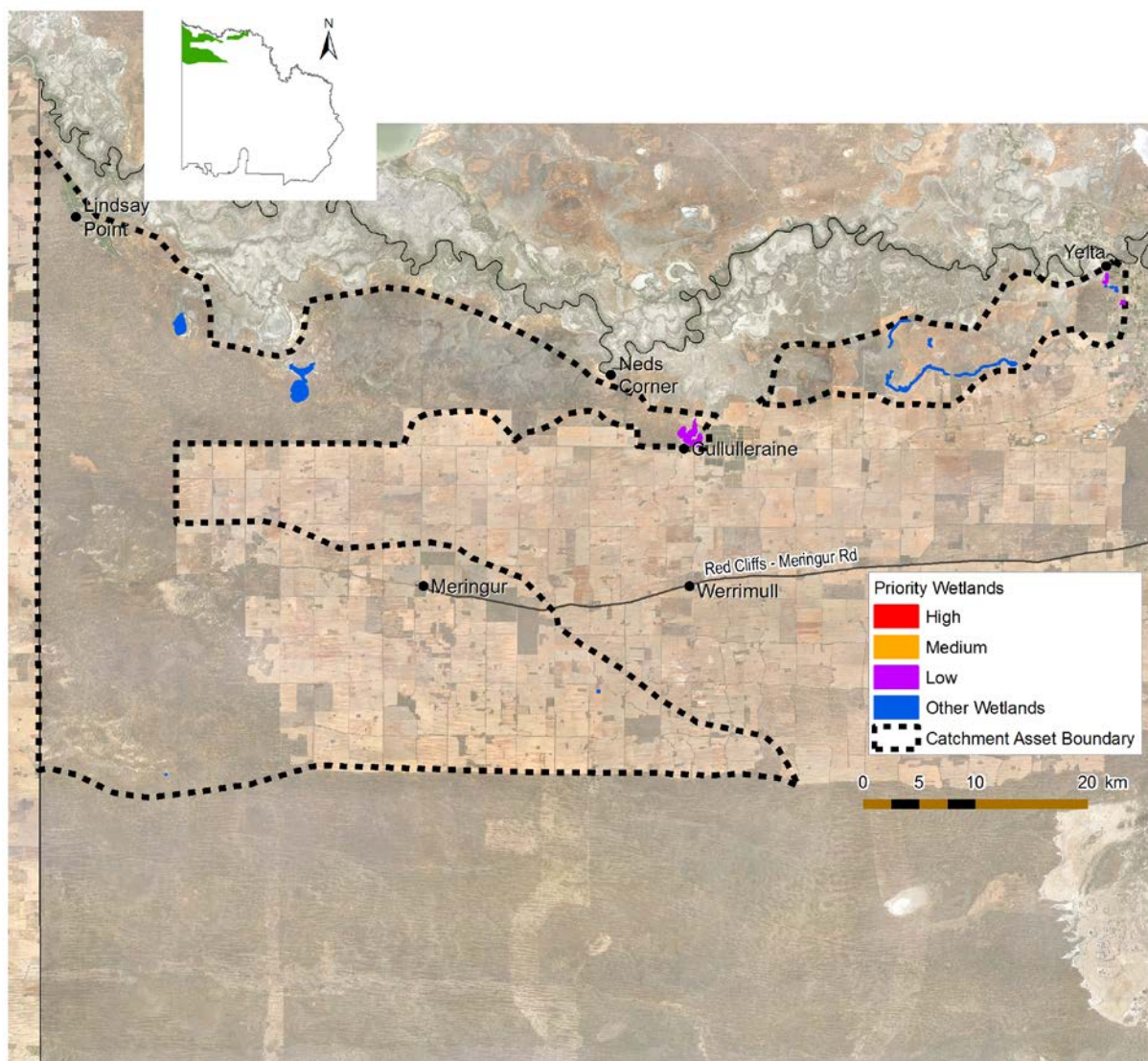


## Wetlands

There are relatively few wetlands to be found within this Catchment Asset. Most are associated with systems that are attached to the Murray River with the most familiar of these being the artificially maintained Lake Cullulleraine. Other systems include those associated with ephemeral waterways such as Boy Creek which runs down to the edge of the floodplain near Wallpolla Island.

The Mallee Waterway Strategy (2014-22) identifies priority wetlands for future management using an Asset Based Approach; facilitating targeted planning and implementation processes to deliver greatest social, cultural and economic returns on our efforts. Each Wetland asset occurring within this Catchment Asset is ascribed a priority of 'high', 'medium', 'low', or 'additional' under this framework.

Based on the available data concerning their extent, quality and policy significance within this landscape, the Wetlands within this Catchment Asset are considered to be of **low** value.



**Figure 2: Wetlands**

## Threatened Species and Communities

A significant range of flora and fauna species that are listed in Federal and State instruments have been observed and recorded within the area of this catchment asset over time. These species are listed in the tables that follow along with their current status as described in the listing instrument. The listing instruments are: Environmental Protection and Biodiversity Conservation (EPBC) Act 1999; Flora and Fauna Guarantee (FFG) Act 1998 and the Victorian Threatened Species Advisory Lists issued by the Department of Environment and Primary Industries (DEPI) (Flora: 2005, Fauna: 2013). The species names included in the following tables (Table 4 & Table 5) may not reflect the full range of threatened flora and fauna species that may inhabit the catchment area. Rather they reflect only species whose presence has been observed and recorded by suitably qualified observers since 1980.

The Catchment Asset area supports a number of threatened species including the Regent Parrot (*Polytelis anthopeplus monarchoides*), Black-eared Miner (*Manorina melanotis*), Mallee Fowl (*Leipoa ocellata*), Greater Long-eared Bat (*Nyctophilus timoriensis*) and the Mallee Emu Wren (*Stipiturus mallee*). Other significant fauna species for Victoria that have been observed here include the Hooded Robin (*Melanodryas cucullata cucullata*), Scarlet-chested Parrot (*Neophema splendida*), Diamond Dove (*Geopelia cuneata*), Major Mitchell's Cockatoo (*Lophocroa leadbeateri*), White-browed Tree Creeper (*Climacteris affinis*), Bandy Bandy (*Vermicella annulata*) and the Lined Earless Dragon (*Tympanocryptis lineata lineata*). The area is also home to more than 70 significant plant species including the range restricted Silvery Emu-Bush (*Eremophila scoparia*) and the Blue-Leafed Mallee (*Eucalyptus cyanophylla*).

This Catchment Asset is one of a number in the Mallee Region that contain remnant areas of the nationally listed ecological community, 'Buloke Woodlands of the Riverina and Murray-Darling Depression Bioregions'. This ecological community is listed as 'endangered' under the Environment Protection and Biodiversity Conservation Act 1999 (EPBC Act).

The river reaches, anabranches and floodplain wetlands contained within this Catchment Asset area provide habitat for some of the members of the Lowland Riverine Fish Community of the Southern Murray–Darling Basin (see Table 7). This is a community of fish species that is listed under the Victorian FFG Act and so qualifies as a threatened ecological community in this context.

The Mallee Bird Community is another listed ecological community under the FFG Act (see Table 6). This Catchment Asset provides suitable habitat for this community and all its members except the Red-lored Whistler (*Pachycephala rufogularis*) have been recorded within the asset area since 1980.

Based on the available data concerning their extent, quality and policy significance within this landscape, the Threatened Species and Communities within this Catchment Asset are considered to be of **high** value.

**Table 4: Threatened Flora Species observed since 1980**

Scientific Name	Common Name	EPBC Act	FFG Act	Victorian Advisory List
<i>Acacia colletioides</i>	Wait-a-while			Rare
<i>Acacia notabilis</i>	Mallee Golden Wattle			Vulnerable
<i>Acacia victoriae subsp. victoriae</i>	Bramble Wattle			Rare
<i>Allocasuarina luehmannii</i>	Buloke		Listed	
<i>Amyema linophylla subsp. orientale</i>	Buloke Mistletoe			Vulnerable
<i>Angianthus brachypappus</i>	Spreading Angianthus			Vulnerable
<i>Asperula gemella</i>	Twin-leaf Bedstraw			Rare



<i>Atriplex acutibractea</i>	Pointed Saltbush			Rare
<i>Atriplex limbata</i>	Spreading Saltbush		Listed	Vulnerable
<i>Atriplex lindleyi</i> subsp. <i>conduplicata</i>	Baldoo			Rare
<i>Atriplex lindleyi</i> subsp. <i>lindleyi</i>	Flat-top Saltbush			Poorly Known
<i>Atriplex papillata</i>	Coral Saltbush			Rare
<i>Atriplex pseudocampanulata</i>	Mealy Saltbush			Rare
<i>Atriplex rhagodioides</i>	Silver Saltbush		Listed	Vulnerable
<i>Atriplex vesicaria</i> subsp. <i>macrocytidia</i>	Bladder Saltbush			Poorly Known
<i>Austrostipa nullanulla</i>	Club Spear-grass	Vulnerable		Vulnerable
<i>Bromus arenarius</i>	Sand Brome			Rare
<i>Calandrinia corrigioloides</i>	Strap Purslane			Rare
<i>Calandrinia volubilis</i>	Twining Purslane			Rare
<i>Centipeda pleiocephala</i>	Tall Sneezeweed			Endangered
<i>Centipeda thespidioides</i> s.l.	Desert Sneezeweed			Rare
<i>Chenopodium desertorum</i> subsp. <i>desertorum</i>	Frosted Goosefoot			Rare
<i>Chenopodium desertorum</i> subsp. <i>rectum</i>	Frosted Goosefoot			Vulnerable
<i>Convolvulus clementii</i>	Desert Bindweed			Vulnerable
<i>Craspedia haplorrhiza</i>	Plains Billy-buttons			Poorly Known
<i>Cratystylis conocephala</i>	Blue-bush Daisy			Endangered
<i>Dactyloctenium radulans</i>	Finger Grass			Rare
<i>Dissocarpus biflorus</i> var. <i>biflorus</i>	Twin-flower Saltbush			Rare
<i>Elachanthus glaber</i>	Smooth Elachanth			Rare
<i>Elachanthus pusillus</i>	Small Elachanth			Rare
<i>Eragrostis australasica</i>	Cane Grass			Vulnerable
<i>Eragrostis setifolia</i>	Bristly Love-grass			Vulnerable
<i>Eremophila oppositifolia</i> subsp. <i>oppositifolia</i>	Twin-leaf Emu-bush			Rare
<i>Eremophila polyclada</i>	Twiggy Emu-bush			Vulnerable
<i>Eremophila scoparia</i>	Silvery Emu-bush			Rare
<i>Eremophila sturtii</i>	Narrow-leaf Emu-bush		Listed	Endangered
<i>Eucalyptus cyanophylla</i>	Blue-leaf Mallee			Rare
<i>Frankenia foliosa</i>	Leafy Sea-heath			Rare
<i>Frankenia serpyllifolia</i>	Bristly Sea-heath			Rare

<i>Gnephosis tenuissima</i>	Dwarf Cup-flower			Rare
<i>Haegiela tatei</i>	Small Nut-heads			Vulnerable
<i>Jasminum didymum subsp. lineare</i>	Desert Jasmine			Vulnerable
<i>Leiocarpa tomentosa</i>	Woolly Plover-daisy			Endangered
<i>Lepidium fasciculatum</i>	Bundled Peppercress			Poorly Known
<i>Lepidium papillosum</i>	Warty Peppercress			Poorly Known
<i>Lepidium phlebopetalum</i>	Veined Peppercress			Endangered
<i>Maireana aphylla</i>	Leafless Bluebush			Poorly Known
<i>Maireana sedifolia</i>	Pearl Bluebush			Rare
<i>Maireana triptera</i>	Three-wing Bluebush			Rare
<i>Malacocera tricornis</i>	Goat Head			Rare
<i>Marsdenia australis</i>	Doubah			Vulnerable
<i>Microcybe multiflora subsp. multiflora</i>	Red Microcybe			Vulnerable
<i>Minuria cunninghamii</i>	Bush Minuria			Rare
<i>Minuria integerrima</i>	Smooth Minuria			Rare
<i>Nicotiana goodspeedii</i>	Small-flower Tobacco			Rare
<i>Olearia calcarea</i>	Lime Daisy-bush			Rare
<i>Parietaria cardiostegia</i>	Mallee Pellitory			Vulnerable
<i>Phlegmatospermum eremaeum</i>	Spreading Cress			Vulnerable
<i>Podolepis canescens</i>	Grey Podolepis			Rare
<i>Ptilotus obovatus</i>	Silver Tails			Endangered
<i>Ptilotus sessilifolius</i>	Crimson Tails			Poorly Known
<i>Ranunculus pumilio var. politus</i>	Ferny Small-flower Buttercup			Poorly Known
<i>Rhagodia ulicina</i>	Spiny Goosefoot			Rare
<i>Rhodanthe polygalifolia</i>	Milkwort Sunray			Rare
<i>Rhyncharrhena linearis</i>	Purple Pentatope			Vulnerable
<i>Rutidosis helichrysoides</i>	Grey Wrinklewort			Endangered
<i>Sarcozona praecox</i>	Sarcozona			Rare
<i>Sclerolaena decurrens</i>	Green Copperburr			Vulnerable
<i>Sclerolaena divaricata</i>	Tangled Copperburr			Poorly Known
<i>Sclerolaena intricata</i>	Poverty Bush			Vulnerable
<i>Sclerolaena muricata var. muricata</i>	Black Roly-poly			Poorly Known
<i>Sclerolaena patentiuspis</i>	Spear-fruit Copperburr			Vulnerable
<i>Sida intricata</i>	Twiggy Sida			Vulnerable

<i>Solanum lacunarium</i>	Lagoon Nightshade			Vulnerable
<i>Swainsona pyrophila</i>	Yellow Swainson-pea	Vulnerable		Vulnerable
<i>Tecticornia triandra</i>	Desert Glasswort			Rare
<i>Templetonia egena</i>	Round Templetonia			Vulnerable
<i>Tetragonia eremaea</i> s.s.	Desert Spinach			Poorly Known
<i>Tetragonia moorei</i>	Annual Spinach			Poorly Known
<i>Tragus australianus</i>	Small Burr-grass			Rare
<i>Trichanthodium skirrophorum</i>	Woolly Yellow-heads			Vulnerable
<i>Velleia arguta</i>	Grassland Velleia			Rare
<i>Wahlenbergia tumidifructa</i>	Mallee Annual-bluebell			Rare
<i>Zygophyllum angustifolium</i>	Scrambling Twin-leaf			Rare
<i>Zygophyllum simile</i>	White Twin-leaf			Rare

**Table 5: Threatened Fauna Species observed since 1980**

Scientific Name	Common Name	EPBC Act	FFG Act	Victorian Advisory List 2013
<i>Amytornis striatus striatus</i>	Striated Grasswren			Near Threatened
<i>Anas rhynchotis</i>	Australasian Shoveler			Vulnerable
<i>Ardea intermedia</i>	Intermediate Egret		Listed	Endangered
<i>Ardea modesta</i>	Eastern Great Egret		Listed	Vulnerable
<i>Ardeotis australis</i>	Australian Bustard		Listed	Critically Endangered
<i>Aythya australis</i>	Hardhead			Vulnerable
<i>Biziura lobata</i>	Musk Duck			Vulnerable
<i>Charadrius australis</i>	Inland Dotterel			Vulnerable
<i>Chelodina expansa</i>	Broad-shelled Turtle		Listed	Endangered
<i>Chlidonias hybridus javanicus</i>	Whiskered Tern			Near Threatened
<i>Chrysococcyx osculans</i>	Black-eared Cuckoo			Near Threatened
<i>Cinclosoma castanotus</i>	Chestnut Quail-thrush			Near Threatened
<i>Circus assimilis</i>	Spotted Harrier			Near Threatened
<i>Climacteris affinis</i>	White-browed Treecreeper		Listed	Vulnerable
<i>Climacteris picumnus victoriae</i>	Brown Treecreeper (south-eastern ssp.)			Near Threatened
<i>Coracina maxima</i>	Ground Cuckoo-shrike		Listed	Vulnerable
<i>Dasyurus maculatus maculatus</i>	Spot-tailed Quoll	Endangered	Listed	Endangered

<i>Dromaius novaehollandiae</i>	Emu			Near Threatened
<i>Falco hypoleucos</i>	Grey Falcon		Listed	Endangered
<i>Falco subniger</i>	Black Falcon			Vulnerable
<i>Gelochelidon nilotica macrotarsa</i>	Gull-billed Tern		Listed	Endangered
<i>Geopelia cuneata</i>	Diamond Dove		Listed	Near Threatened
<i>Haliaeetus leucogaster</i>	White-bellied Sea-Eagle		Listed	Vulnerable
<i>Hydroprogne caspia</i>	Caspian Tern		Listed	Near Threatened
<i>Leipoa ocellata</i>	Malleefowl	Vulnerable	Listed	Endangered
<i>Lophocroa leadbeateri</i>	Major Mitchell's Cockatoo		Listed	Vulnerable
<i>Maccullochella peelii</i>	Murray Cod	Vulnerable	Listed	Vulnerable
<i>Macquaria ambigua</i>	Golden Perch			Near Threatened
<i>Manorina melanotis</i>	Black-eared Miner	Endangered	Listed	Critically Endangered
<i>Melanodryas cucullata cucullata</i>	Hooded Robin		Listed	Near Threatened
<i>Morelia spilota metcalfei</i>	Carpet Python		Listed	Endangered
<i>Neophema splendida</i>	Scarlet-chested Parrot		Listed	Vulnerable
<i>Ninox connivens connivens</i>	Barking Owl		Listed	Endangered
<i>Nycticorax caledonicus hillii</i>	Nankeen Night Heron			Near Threatened
<i>Oreoica gutturalis gutturalis</i>	Crested Bellbird		Listed	Near Threatened
<i>Phalacrocorax varius</i>	Pied Cormorant			Near Threatened
<i>Platalea regia</i>	Royal Spoonbill			Near Threatened
<i>Polytelis anthopeplus monarchoides</i>	Regent Parrot	Vulnerable	Listed	Vulnerable
<i>Pomatostomus temporalis temporalis</i>	Grey-crowned Babbler		Listed	Endangered
<i>Pseudonaja aspidorhyncha</i>	Patch-nosed Brown Snake			Near Threatened
<i>Pyrrholaemus brunneus</i>	Redthroat		Listed	Endangered
<i>Rhynchoedura ornata</i>	Beaked Gecko		Listed	Critically Endangered
<i>Sminthopsis crassicaudata</i>	Fat-tailed Dunnart			Near Threatened
<i>Sminthopsis murina murina</i>	Common Dunnart			Vulnerable
<i>Stagonopleura guttata</i>	Diamond Firetail		Listed	Near Threatened
<i>Stiltia isabella</i>	Australian Pratincole			Near Threatened
<i>Stipiturus mallee</i>	Mallee Emu-wren	Endangered	Listed	Endangered
<i>Struthidea cinerea</i>	Apostlebird		Listed	
<i>Tandanus tandanus</i>	Freshwater Catfish		Listed	Endangered

<i>Todiramphus pyrropygia pyrropygia</i>	Red-backed Kingfisher			Near Threatened
<i>Turnix pyrrhotorax</i>	Red-chested Button-quail		Listed	Vulnerable
<i>Turnix velox</i>	Little Button-quail			Near Threatened
<i>Vermicella annulata</i>	Bandy Bandy		Listed	Vulnerable

**Table 6: Mallee Bird Community as listed under FFG Act**  
(including individual species listing and number of records since 1980 from Victorian Biodiversity Atlas)

Species Name	Common Name	Records since 1980	EPBC	FFG	DSE Advisory List
<i>Amytornis striatus striatus</i>	Striated Grasswren	1			Near Threatened
<i>Cinclosoma castanotus castanotus</i>	Chestnut Quail-thrush	5			Near Threatened
<i>Drymodes brunneopygia</i>	Southern Scrub-robin	4			
<i>Hylacola cautus cautus</i>	Shy Heathwren	2			
<i>Leipoa ocellata</i>	Malleefowl	1	Vulnerable	Listed	Endangered
<i>Manorina melanotis</i>	Black-eared Miner	1	Endangered	Listed	Critically Endangered
<i>Pachycephala inornata</i>	Gilbert's Whistler	24			
<i>Pachycephala rufogularis</i>	Red-lored Whistler	No Records	Vulnerable	Listed	Endangered
<i>Stipiturus mallee</i>	Mallee Emu-wren	1	Endangered	Listed	Endangered

**Table 7: Lowland Riverine Fish Community of the Southern Murray–Darling Basin as listed under FFG Act**  
(including individual species listing and number of records since 1980 from Victorian Biodiversity Atlas)

Species Name	Common Name	Records since 1980	EPBC	FFG	DSE Advisory List
<i>Ambassis agassizii</i>	Agassiz's Chanda Perch	No Records		Listed	Regionally Extinct
<i>Bidyanus bidyanus</i>	Silver Perch	No Records		Listed	Vulnerable
<i>Craterocephalus fluviatilis</i>	Murray Hardyhead	No Records	Endangered	Listed	Critically Endangered
<i>Craterocephalus stercusmuscarum fulvus</i>	Non-specked Hardyhead	No Records			
<i>Galaxias rostratus</i>	Flat-headed Galaxias	No Records			Vulnerable
<i>Hypseleotris klunzingeri</i>	Western Carp Gudgeon	1			

<i>Maccullochella macquariensis</i>	Trout Cod	No Records	Endangered	Listed	Critically Endangered
<i>Maccullochella peelii peelii</i>	Murray Cod	7	Vulnerable	Listed	Vulnerable
<i>Macquaria ambigua</i>	Golden Perch	12			Near Threatened
<i>Macquaria australasica</i>	Macquarie Perch	No Records	Endangered	Listed	Endangered
<i>Melanotaenia fluviatilis</i>	Murray-Darling Rainbowfish	No Records		Listed	Vulnerable
<i>Mogurnda adspersa</i>	Southern Purple-spotted Gudgeon	No Records			Regionally Extinct
<i>Nematoalosa erebi</i>	Bony Bream	7			
<i>Philypnodon grandiceps</i>	Flat-headed Gudgeon	No Records			
<i>Tandanus tandanus</i>	Freshwater Catfish	3		Listed	Endangered

## Terrestrial Habitat

The catchment asset area lies across the boundaries of two Interim Biogeographic Regionalisation for Australia (IBRA) sub- regions: the Murray Scroll Belt and the Murray Mallee (see Figure 3). Each of these sub-regions is part of a much larger IBRA bioregion. The Murray Scroll Belt is part of Riverina IBRA bioregion which extends eastwards upriver to take in the lower Murrumbidgee, mid Murray and lower Goulburn & Broken River valleys. The Murray Mallee is part of the Murray-Darling Depression IBRA bioregion that takes in the lower south western portion of the Murray-Darling Basin, spread across Victoria, South Australia and New South Wales.

Some 70% of the catchment asset area retains its native habitat in some form or another. A significant proportion of this remnant habitat is considered 'vulnerable' in terms of its bioregional conservation status (see Figure 3).

This catchment asset is named for the broad area of semi-arid savannah woodland that dominates the western half of the asset area and incorporates a number of ecological vegetation classes. Predominately reserved within Murray Sunset National Park and a number of smaller reserves, this woodland expanse provides relatively high quality habitat for a range of species due to a general lack of historical disturbance. One feature of this savannah woodland is the remnant belah (*Casuarina pauper*) woodland reserved within the Yarrara Flora and Fauna Reserve and the nearby Meringur and Mallanbool Reserves.

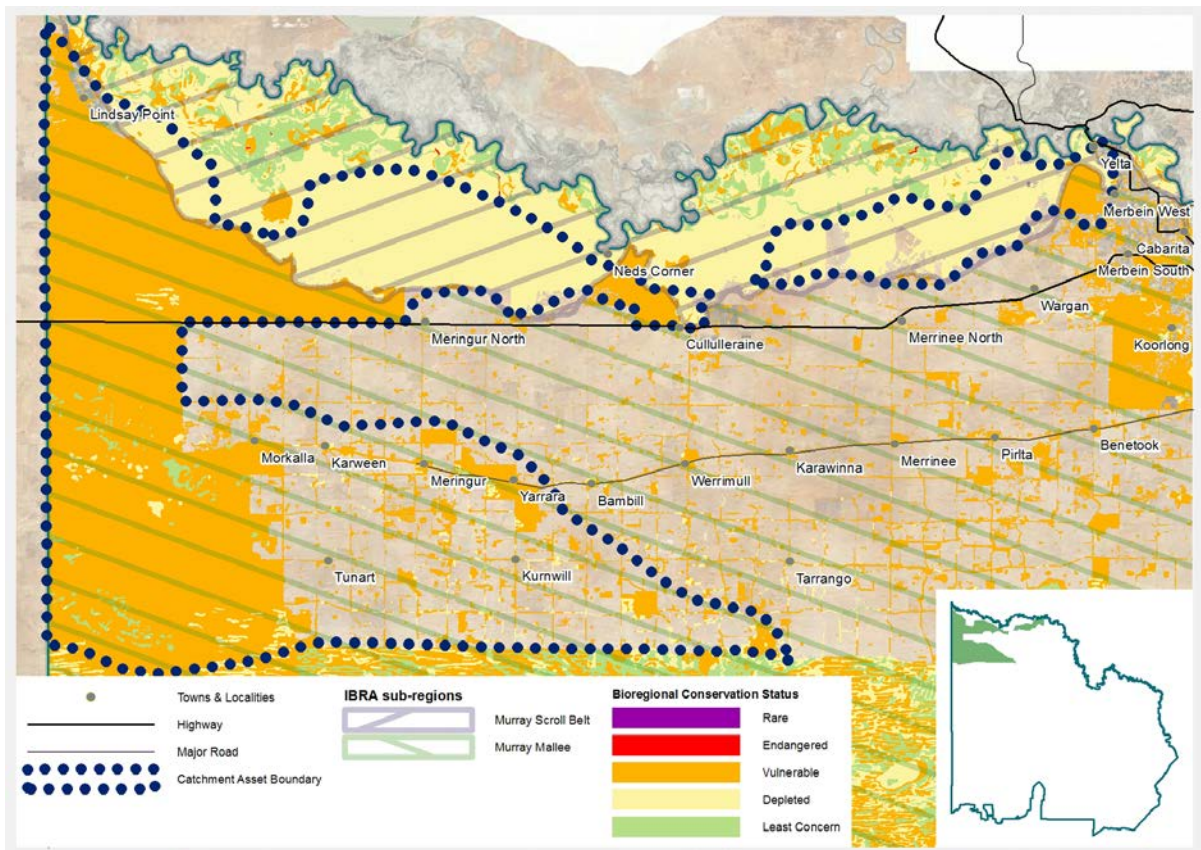
The other distinctive habitat feature within this catchment asset is the extensive Low Chenopod Shrubland on the flats and slopes just above the Murray River floodplain. The current bioregional conservation status of this habitat is listed as 'depleted' and the extent contained within this catchment asset is perhaps one of the largest and most ecologically important areas of this particular ecological vegetation class in Victoria.

The table below lists each of the Catchment Asset's EVCs along with the IBRA subregion within which they are contained, their Bioregional Conservation Status (BCS) and their area in hectares.

**Table 8: Area of Ecological Vegetation Classes and their Bioregional Conservation Status**

Ecological Vegetation Class	IBRA Subregion	Conservation Status	Area (hectares)
Chenopod Mallee	Murray Mallee	Vulnerable	17667.99
	Murray Scroll Belt	Vulnerable	26.11
Lake Bed Herbland	Murray Scroll Belt	Vulnerable	1.52
Lignum Shrubland	Murray Scroll Belt	Least Concern	22.24
Lignum Swampy Woodland	Murray Scroll Belt	Depleted	194.62
	Murray Mallee	Vulnerable	2.05
Loamy Sands Mallee	Murray Mallee	Least Concern	13.37
Low Chenopod Shrubland	Murray Mallee	Depleted	406.89
	Murray Scroll Belt	Depleted	27328.62
Riverine Chenopod Woodland	Murray Mallee	Depleted	53.05
	Murray Scroll Belt	Depleted	876.3
Samphire Shrubland	Murray Mallee	Least Concern	1353.48
Semi-arid Chenopod Woodland	Murray Scroll Belt	Depleted	11305.21
	Murray Mallee	Vulnerable	5016.33
Semi-arid Parilla Woodland	Murray Mallee	Vulnerable	3133.7
Semi-arid Woodland	Murray Mallee	Vulnerable	51645.16
	Murray Scroll Belt	Vulnerable	645.46
Sub-saline Depression Shrubland	Murray Scroll Belt	Vulnerable	38.24
Woorinen Mallee	Murray Mallee	Vulnerable	18494.81
Woorinen Sands Mallee	Murray Mallee	Depleted	2083.41
	Murray Scroll Belt	Depleted	1.26





**Figure 3: Bioregional conservation status of EVCs and IBRA sub-regions**

DEPI's NaturePrint model is a landscape scale spatial planning mechanism that provides an analysis of biodiversity values across Victoria and combines the available information about biodiversity values, threatening processes and ecosystem function. It provides an analysis of the ecological value of a portion of landscape compared across the entire Victorian landscape. It is based on the following measures:

- Mathematical models of species distributions and habitats;
- The condition of these habitats;
- Pathways for connectivity across landscapes;
- Connectivity potential and recoverability;
- Threats to species persistence.

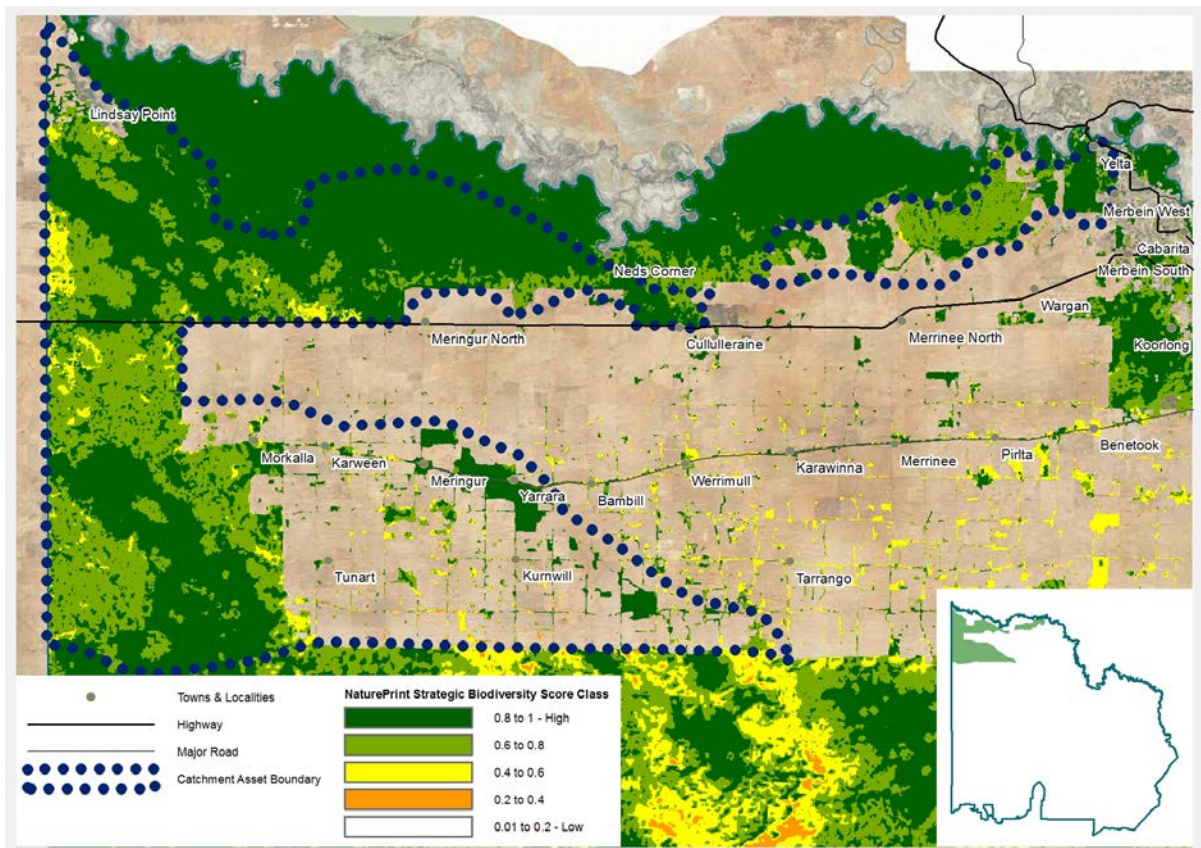
For background information about the model, its output and its significance, refer to:

<http://www.depi.vic.gov.au/environment-and-wildlife/biodiversity/natureprint>.

The NaturePrint model considers that over 91% of this Catchment Asset contains terrestrial habitat that is of the highest ecological value to Victoria and therefore high priority for protection and conservation.

Based on the available data concerning their extent, quality and policy significance within this landscape, the Terrestrial Habitat within this Catchment Asset is considered to be of **very high** value.





**Figure 4: Terrestrial Habitat given high ecological value by NaturePrint Version 3**

## Soils

The soils of this catchment asset area are predominantly Calcarosols. These are soils that are highly variable in their structure throughout the region and yet they are desirable in terms of agricultural production in the Mallee region.

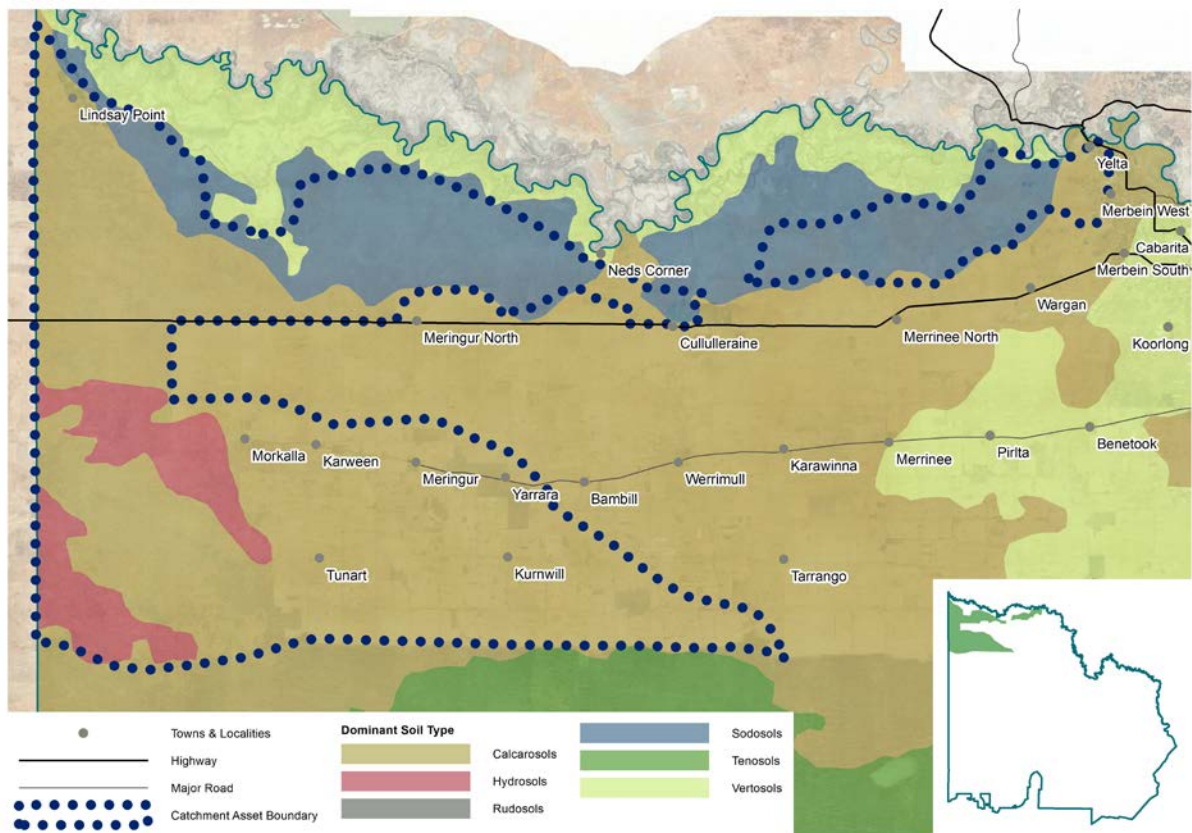
Closer to the Murray River, the soils are typically Sodosols. These are soil types where the sub-soil layers are sodic in nature and they have a distinct textural difference between the surface soil layer and the sub-soil. These soil types are common in riverine country in our region and are known for areas of 'scalding' when the soil is mismanaged. These scalded areas occur when the surface soil layers are lost and the exposed sub-soil seals as a result of exposure to rain and wind. This sealing makes them very difficult to rehabilitate.

In the south west of the asset area (within the Murray-Sunset National Park) are two portions dominated by Hydrosols that are associated with natural groundwater discharge zones. These soils are variably saline and seasonally saturated depending on the prevailing depth to the water table.

The soils of this Catchment Asset area are predominantly valued for their capacity to provide for terrestrial habitat and the support the production of food and fibre. However, there is also an understanding that the structure of the soil and its natural capacity to resist threatening processes such as wind erosion is also of substantial value.

There is currently no accepted framework to categorise our soil asset in terms of value from lower to higher based purely upon the social, economic and environmental values and services they provide. Such a framework has only been considered to date in terms of the threatening processes that may impinge on the capacity of our soils asset to provide the services we have come to expect. This will be discussed later in this document. Despite this limitation, the most appropriate course of action is to consider the relative value of the soil asset according to its intrinsic capacity to support the other regional assets within this catchment asset as the basis for applying a value category.

Therefore, the Soils within this Catchment Asset are considered to be of **high** value.



**Figure 5: Dominant Soil Types**

## Agricultural Land

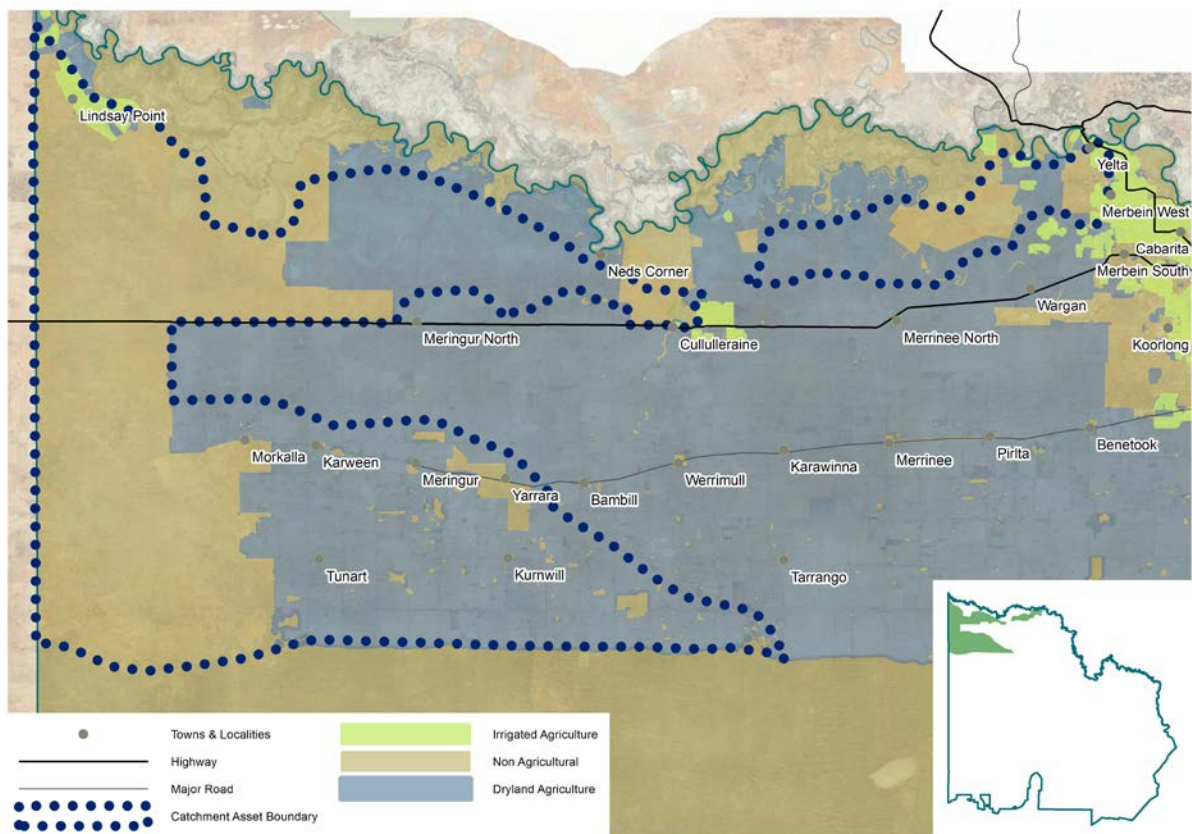
Almost 40% of the asset area is given over to agricultural activities. Dryland farming predominates with a mixture of cropping and grazing enterprises spread across most of the area except the far west. Approximately 2% of the asset area is occupied with irrigated agriculture. These activities are centred on Lindsay Point in the far north west and Yelta and Merbein West in the far north east (Figure 7).

The agricultural land of this Catchment Asset area is mainly valued for its capacity to support the production of food and fibre. This in turn provides for a range of other social and economic services that are important to the Mallee region. In addition, when these services are available, they support the local community in its efforts to maintain and enhance not only their agricultural land but other regional assets.

There is currently no accepted framework to categorise our agricultural land asset in terms of value from lower to higher based purely upon the social and economic values and services they provide. Such a framework has only been considered to date in terms of the threatening processes that may impinge on the capacity of our agricultural land asset to provide the services we have come to expect. This will be discussed later in this document. As a result, the most appropriate course of action is to consider the relative value of the agricultural land asset at a regional scale rather than at a catchment asset scale and in accordance to its capacity to provide and support social and economic values.

Therefore, the Agricultural Land within this Catchment Asset are considered to be of **high** value.





**Figure 6: Agricultural land use**

## Groundwater

Groundwater aquifers that lie underneath this Catchment Asset area are not known to be utilised to provide a water resource for human uses. Therefore, the Mallee's groundwater asset is not of significance to this Catchment Asset.

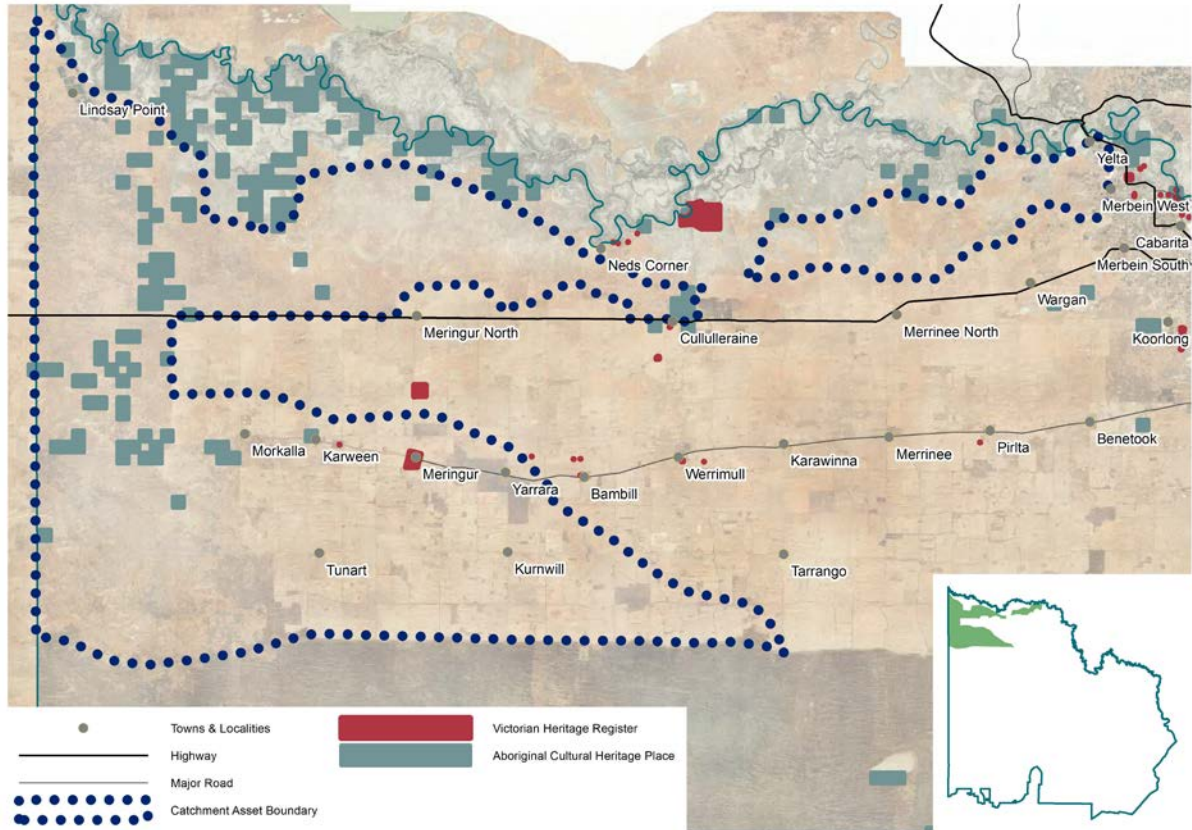
## Cultural Heritage

The catchment asset area has important Indigenous and non-Indigenous cultural value. Aboriginal people have had a connection to this area for tens of thousands of years. A significant number of cultural heritage sites occur in this area, ranging from small sites and earth features to larger sites containing artefacts, ovens and midden sites. From a European perspective, the area contains a number of heritage overlays that encompass sites of historical significance. Figure 7 provides a visualisation of where sites of indigenous and European cultural significance have been recorded.

Cultural heritage sites in this Catchment Asset area are predominantly valued for the connection they provide to the community between the social and cultural landscape that we currently enjoy and the stories, ideas and history of how that came to be. These sites provide individuals and families with a physical representation of their connection to the Mallee landscape and their place in it. These connections are extremely important to these people and, in turn, can reflect upon how they value and relate to the Mallee landscape that they are familiar with today. Therefore it is important to all that these sites are managed and protected in a manner that is sympathetic to those connections and values. Heritage significance is typically assessed under a three-tier legislative system that determines the local, state, national or commonwealth significance of an item. Heritage items can also be included on non-statutory listings (such as the National Trust classifications). However, there is no single and simple approach to categorise our cultural heritage asset in terms of value to the region. Tradition distinctions between different types of value (such as economic, social and environmental values) can be determined but this data is only patchily available given the number and range of cultural heritage sites across the Mallee. The most appropriate course of action at this point is to give

equal value to all recognised cultural heritage sites in the Mallee regardless of their age, form and historical background.

Therefore, Cultural Heritage within this Catchment Asset and across the region is considered to be of **high** value. Any further processes undertaken to prioritise and target management actions will rely on assessments of risk likelihood and impact to those sites.



*Figure 7: Areas of Cultural Value*

## Community Capacity

Community capacity is an important asset as positive and long-lasting NRM outcomes are dependent on an active, willing and capable community. In order to achieve regional scale NRM outcomes, people have to play a major role, often in partnership with government and industry, in the ongoing conservation and sustainable use of our Regional Assets. This requires Mallee communities to have the capacity to work cooperatively, apply economic resources, use networks and acquire and use relevant knowledge and information to achieve NRM outcomes. Maintaining and improving this capacity is dependent not only on the financial, physical and natural resources contained within or available to a community but also its social resources.

Community capacity therefore requires ongoing development, conservation and management as its relative condition can influence the achievement of all other biophysical goals and actions outlined within the RCS.

Our communities' capacity is defined by their characteristics and resources which, when combined, determine their ability to identify, evaluate and address key issues.

Characteristics of strong regional community capacity include:

- Individuals within the community being aware of regional NRM issues, and understanding the link between these issues and the long-term viability of the community

- Natural resource managers and users being able and willing to access the necessary information, data and science – biophysical, social and economic – to make sound NRM decisions
- Natural resource managers and users being equipped with or having access to, the necessary technical, people management, project management and planning skills to Social, participate in the development and implementation of sustainable NRM at the property, local and regional scales
- Community being engaged and motivated, and exercising ownership over NRM decision making processes and effectively implementing actions arising from these processes (DAFF 2006).

This catchment asset area is relatively sparsely populated and yet has four distinct areas of human occupation occurring mostly at the edges of the area – Yelta and Merbein West in the east, Lake Cullulleraine in the north, Lindsay Point in the west and Meringur in the south. Despite the number of small communities, fewer than 400 people resided within the Catchment Asset area in 2011 (ABS, 2013). However, this area is heavily used as a recreation resource and tourism destination by populations both within and external to the Mallee. Therefore, while the resident community is of critical importance to the ongoing management of the catchment asset, it is this wider population of occasional users whose capacity for effective and sustainable natural resource management is potentially quite influential in the long term by virtue of its greater size.

This catchment asset area is particularly well serviced by community driven NRM organisations which reflects well on the capacity of the local community to contribute to effective NRM outcomes. There are two active Landcare groups (Millewa-Carwarp; and Yelta) whose areas of influence lie partially or wholly within the asset area.

The asset area is one of strongholds of Mallee Sustainable Farming, a highly respected not-for-profit agricultural and research and extension organisation that is led by and works for cropping farmers in the northern half of the Mallee, south-western NSW and the Riverland of SA.

Trust for Nature is another important contributor to NRM within this asset area. This not for profit organisation is a Victorian Government statutory body that fosters environmental conservation principles through the use of conservation covenants. One of its functions is the acquisition of land either temporarily or permanently in order to apply perpetual conservation covenants to the land to benefit biodiversity. Trust for Nature owns the 30,000 hectare Ned's Corner Station and much of this property lies within this Catchment Asset area.

A complete listing of all the known community NRM organisations within the catchment asset can be found in the Community NRM Groups section.

Whilst there are a number of methods available to evaluate the relative 'condition' of our community's capacity for NRM there is currently no accepted framework to categorise the community capacity asset in terms of value from low to high based upon the values and services it may provide. As a result, the most appropriate course of action is to consider the relative value of community capacity for NRM in terms of its potential contribution to NRM outcomes at a regional scale and what those NRM outcomes might be (and how sizeable the resources required to achieve them) if that contribution was not forthcoming. Under those circumstances, it is relatively easy to come to the conclusion that, without the communities' investment into NRM through exercising that community capacity asset, the scale and success of our NRM outcomes will be curtailed while their cost in resources increases. Such a situation would not benefit the Mallee region or its Regional Assets.

Therefore, Community Capacity within this Catchment Asset and across the region is considered to be of **high** value.



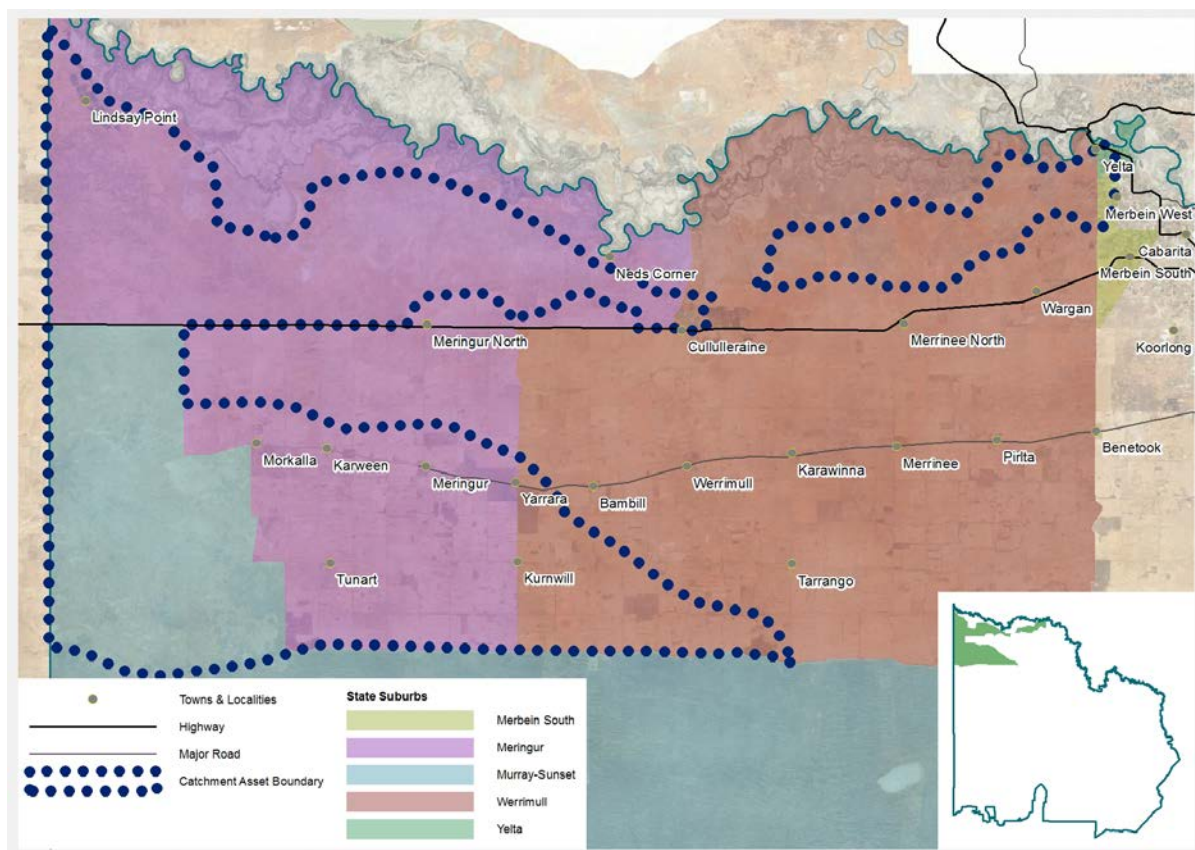


Figure 8: State Suburbs

## Section 3 – Threatening Processes in this Catchment Asset

Threatening processes in the Mallee NRM region were defined and applied as part of the development of Mallee Regional Catchment Strategy by the Regional Catchment Strategy Steering Committee. Each of the following sub-sections provides a background to these threatening processes, available information about their form within this Catchment Asset and some discussion regarding the impact of these processes on our regional assets. This follows on to an assessment of the relative threat level posed by each the threatening processes based on the criteria contained in Appendix 2. *Categorising Threatening Processes*.

## Land & water salinisation

Land and water salinisation is defined as: “Salinisation of the soil and water resources through the displacement of salt as a result of natural and human induced drivers.”

Salinisation of soils is caused by discharge of groundwater to the atmosphere by direct transpiration of groundwater by vegetation or by capillary rise from the water table through the soil profile to either the soil surface (evaporation) or the bottom of the plant root zone. Salt contained in the water that is evaporated and/or transpired is left behind and accumulates in the soil. High rates of groundwater discharge, and hence salt accumulation, only occur in areas where water tables are shallow (typically less the 10 m, with the most severe effects when the water table is less than 5 m).

There are many naturally saline wetlands and wetland complexes in the Mallee that are situated in areas where the underlying water tables are naturally shallow. Better known examples of these natural systems include the Tyrrell Basin, Raak Plain and the Pink Lakes. These are natural saline systems that have historically developed and been maintained in a balance that provided for stable ecological communities. However, agricultural development in the last century has altered the long term balance of these systems. The removal of much of the Mallee vegetation and the use of land management techniques that were comparatively inefficient users of rainfall (compared to Mallee woodlands) allowed deep drainage past the root zone. Depending on the location, this deep drainage either manifest itself as localised discharge zones in dune swales or contributed to further shallowing of the regional water table. As water tables came closer to the surface, more wetlands and wetland ecosystems were threatened by increasing salinity and increasing areas of salinised landscape.

The incremental improvement in agricultural land management techniques to maximise water use efficiency and minimise through drainage over the last two decades coupled with the broad scale effect of the so-called Millennium Drought have begun to swing the balance back towards a more neutral status. Water table depths have fallen and correspondingly so have salinity impacts in the landscape.

Despite these recent advances, the risks remain. Many of the triggers in the landscape that created the salinisation problem still remain. Most notable of these are the altered flow regimes in our watercourses and wetlands and the large, open areas cleared of perennial Mallee vegetation. These are historical landscape modifications that are not expected to be rectified since they have provided for the bulk of the Mallee’s resultant economic and social activity. Lapses in our current regimes of effective land and water management coupled with a changing climate can easily contribute to the return of a significant period of land and water salinisation.

This catchment asset contains two significant areas of natural salinity. The first is extended low slopes down to the Murray River situated to the west of Neds Corner. The second is a network of saline discharge zones in the south west with the National Park. This second area is also where areas of induced salinity have concentrated as a result of water table increases resulting from land use change.

Approximately 15% of the asset area has watertable depth within 5 metres of ground level. Otherwise, depth to water table is typically greater than 10 metres below ground level so the relative risk of regional scale salinity remains low in this area. However, local scale induced salinity remains a possibility in the event of poor land and water management techniques being in place.

This catchment asset includes a large area of naturally saline landscape situated to the west of Lake Cullulleraine which accounts for a little over 10% of the total catchment asset area. Classification of



induced and natural saline surfaces in 2009 indicates there is only 99 hectares of induced saline surfaces in the catchment asset area (Mock & Grinter, 2009). This induced salinity is generally confined to a small number of wetlands in the eastern end of the asset area. These areas of induced saline surfaces represent only a 1.2% increase in the area of saline surfaces over and above that which would be considered 'natural'.

Depth to the regional watertable and the general trends in groundwater levels were modelled in 2010 throughout the Mallee based on analysis of available groundwater data. A little over 3% of the catchment asset area has typically saline groundwater within 2 metres of the ground surface while more than 60% has saline groundwater within 5 metres of the ground surface. Therefore, over 30,000 hectares of the catchment asset area is considered to have a moderate or higher risk of salinisation.

Given the current status of land and water salinisation in the Catchment asset area and consideration of the future potential of this threatening process to produce negative impacts within the area, the priority of action with respect to each Regional Asset has been determined. They are listed in the table below along with the summary of the logic behind the priority determination.

**Table 9: Prospective Priority of Action to address Land and Water Salinisation upon Regional Assets**

Regional Asset	Priority of Action	Summary Logic
Rivers	<b>MEDIUM</b>	<b>To be documented</b>
Wetlands	<b>MEDIUM</b>	<b>To be documented</b>
Threatened Species and Communities	<b>MEDIUM</b>	<b>To be documented</b>
Terrestrial Habitat	<b>MEDIUM</b>	<b>To be documented</b>
Soils	<b>MEDIUM</b>	<b>To be documented</b>
Agricultural Land	<b>LOW</b>	<b>To be documented</b>
Groundwater	<b>NONE</b>	<b>To be documented</b>
Cultural Heritage	<b>NONE</b>	<b>To be documented</b>
Community Capacity	<b>NONE</b>	<b>To be documented</b>

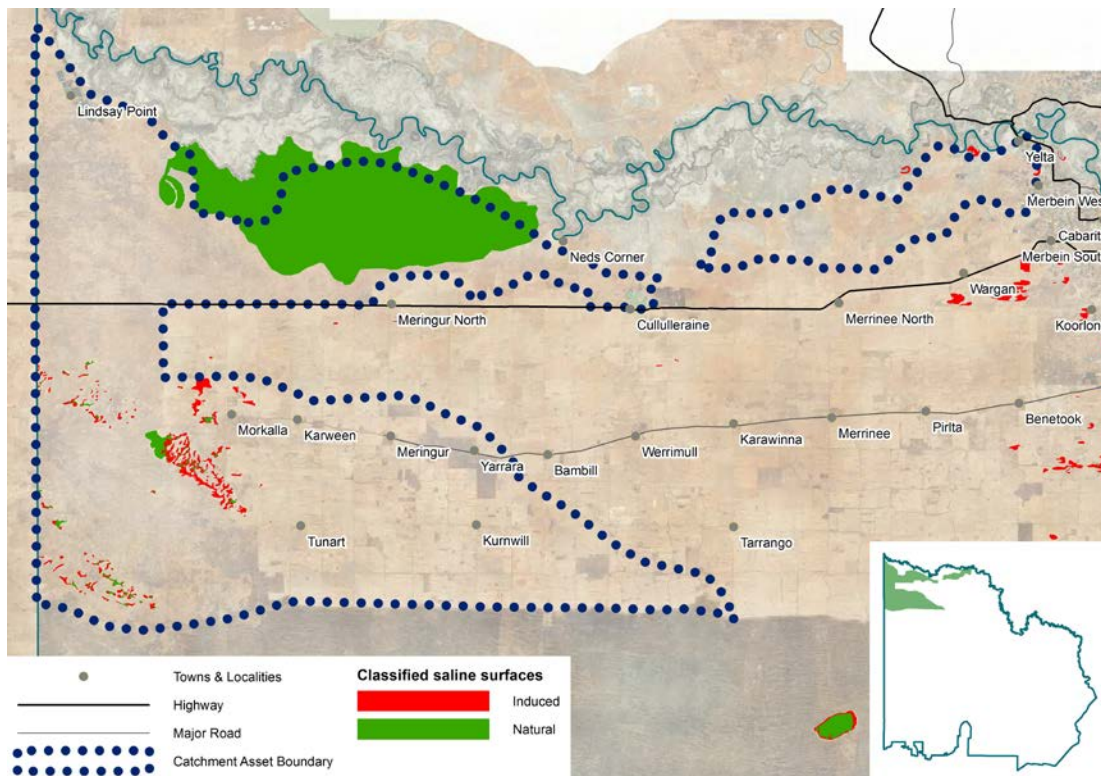


Figure 9: Natural and Induce Saline Surfaces

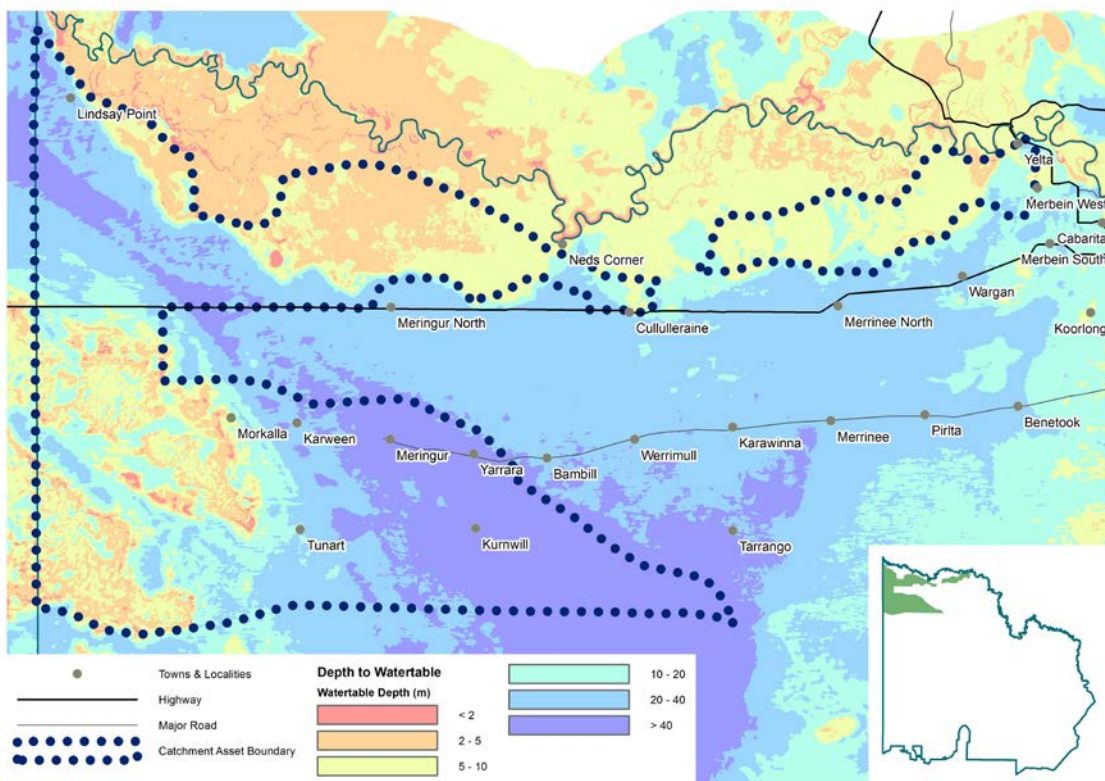


Figure 10: Estimated Depth to the Water table

## Invasive Plants

Currently there are 25 State Prohibited Weeds, 4 Regionally Prohibited Weeds and 14 Regionally Controlled Weeds listed under the Catchment and Land Protection (CaLP) Act for the Mallee region. In addition to the conventional ways that weeds spread (e.g. wind and water) in the Mallee, disturbance from pest animals such as rabbits, goats and pigs also create good conditions for weed growth and contribute to weed spread.

Invasive plants in the Mallee threaten both biodiversity and the productive capacity of land. In many cases, weed infestation has changed the composition and character of the ecological landscape. Weed infestations also impact on the use of popular recreational spots in riparian areas, affecting aesthetic values and limiting access. Environmental weeds compete with established and regenerating indigenous species, threatening the quality and extent of native vegetation and reducing the diversity and availability of habitat. Environmental weeds present a significant risk to remnant roadside vegetation, as the 'edge effect' is particularly difficult to manage in these long, thin areas.

Agricultural weeds cause significant losses for horticulture and dryland farming through competition with crops and by reducing the quality of produce. Their control increases the cost of production and, in extreme cases, can diminish the productive capability of the land.

While the presence of recognised weed species in the asset area is almost certain, there is insufficient data available to adequately describe the current scope and scale of pest plant populations for the purposes of effective regional control. The available spatial data on invasive plant infestations dates back to 2007 and was generated as part of the Priority Weed Mapping project in 2008. This information is obviously now far out of date. The current information and response capacity relies heavily on local activity at a local scale in response to local weed infestations. This approach, while often very successful, tends to preclude centralised management and control at a regional scale. Therefore, the priority of action to address invasive plants is strongly influenced by local scale data derived from local planning instruments and informal community consultation at the local level. On the other hand, limited knowledge and understanding of the vulnerability of the Mallee landscape to future weed incursions is available given the current listing of known invasive plants, the current understanding of their biological requirements and the planning and response framework provided by regional scale plans such as the Mallee Invasive Plants and Animals Management Strategy (IPAWS).

The IPAWS identifies 21 regional assets (based on geographic areas) across the Mallee region. This Catchment Asset area contains three of these geographic assets: Agricultural Land; North West Savannah Woodlands; and the Yarrara, Meringur and Mallanbool Reserves. Of these, only the North West Savannah Woodlands was considered to be a high priority for on-ground action to manage invasive plants and animals. The area was also recommended to be a focal point for research into the control of Ward's Weed (*Carrichtera annua*). The remaining assets were identified as areas where monitoring for future action and maintaining previous management gains was considered sufficient.

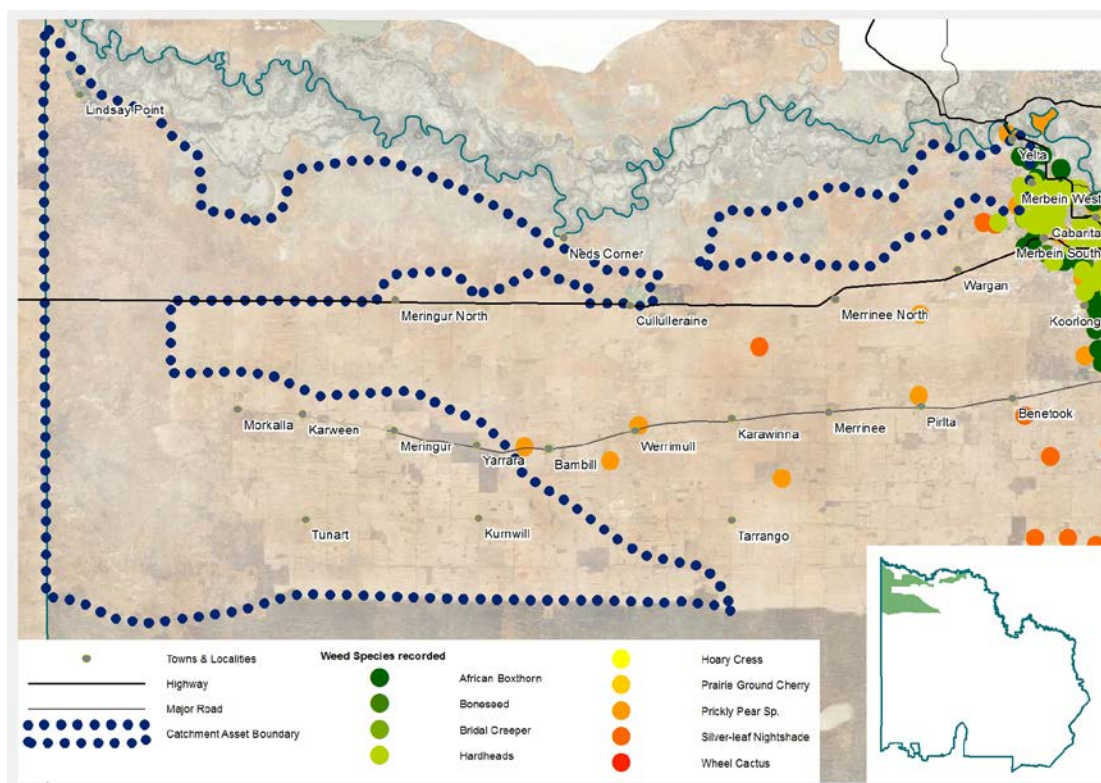
Using this combination of information gathering approaches and the application of a complimentary consultative process, the priority of action for dealing with invasive plants with respect to each Regional Asset has been determined. They are listed in the table below along with the summary of the logic behind the priority determination.

**Table 10: Prospective Priority of Action to address Invasive Plants upon Regional Assets**

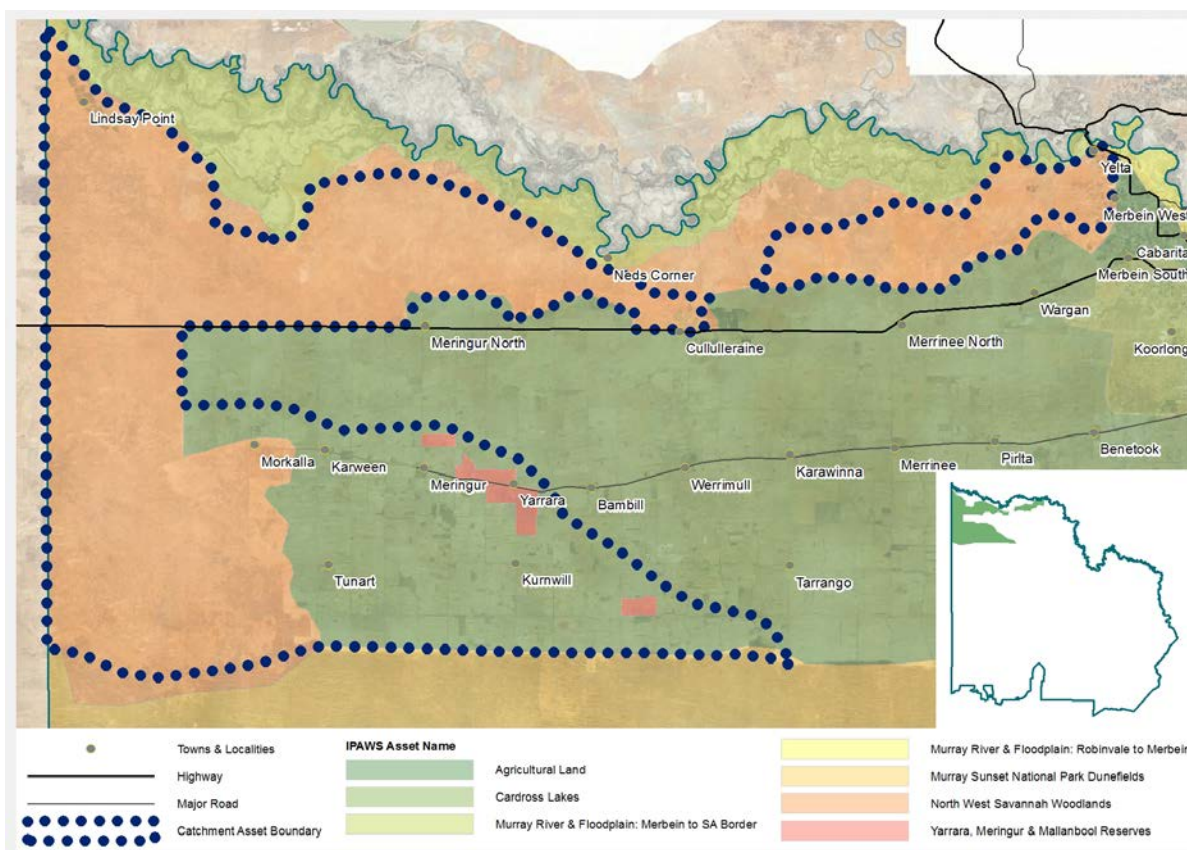
Regional Asset	Priority of Action	Summary Logic
Rivers	LOW	To be documented
Wetlands	HIGH	To be documented
Threatened Species and Communities	HIGH	Buloke woodlands are an endangered ecological community and lie within the high priority IPAWS asset area



Terrestrial Habitat	<b>HIGH</b>	Most remnant habitat in asset area is small and linear in shape; much lies within the high priority IPAWS asset area
Soils	<b>HIGH</b>	<b>To be documented</b>
Agricultural Land	<b>HIGH</b>	<b>To be documented</b>
Groundwater	<b>NONE</b>	This regional asset is not present within this catchment asset
Cultural Heritage	<b>HIGH</b>	<b>To be documented</b>
Community Capacity	<b>NONE</b>	Invasive plants do not pose a significant threat to community capacity at this time



**Figure 11: Priority Weed Infestations Recorded Between 2005 and 2007**



**Figure 12: Regional Assets from the Mallee Invasive Plants and Animal Strategy**

## Invasive Animals

Invasive animals in terms of the Mallee RCS are regarded as those established invasive pest animals as defined in Part 8 of the CaLP Act 1994

Australia is host to 56 invasive vertebrate animal species. Of these, the ones with the most impact (in order of damage estimates) are: European Red Fox, feral cats, rabbits, feral pigs, wild dogs, the house mouse, carp and goats. The Mallee region hosts populations of all of these species. However, of most significance to the Mallee is the European Red Fox and Rabbits – both are declared under the Catchment and Land Protection (CaLP) Act 1994.

Invasive species are considered to be pests when they have, or have the potential to have, an undesirable economic, environmental or social/cultural impact. Such impacts may include damage to agricultural crops, livestock predation, indigenous fauna predation, soil erosion and land degradation, spread of weeds, pasture/food and habitat competition, and the potential spread of disease. Gong et al. (2009) estimated the overall direct economic impact of several pest animal species (foxes, rabbits, wild dogs, feral pigs, birds and mice) in Australia to be \$740 million annually. This included \$620.8 million of production losses in agriculture (including horticulture) and \$122.7 million on expenditure on pest animal management, administration and research in Australia. Some of the social impacts of pest animals include damage to infrastructure or cultural/historical sites, being 'a nuisance', causing traffic accidents, as well as significant social/psychological impacts on primary producers; for example, through distress of wild dog predation on livestock.

Other non-declared pest animals present in the Mallee include feral Bees, European Wasps, Hares, Starlings, Snails, Rats, Mice and Locusts.

More than 45% of the catchment asset area is considered highly susceptible to rabbit activity. A further 12% is considered susceptible to rabbit activity. However, there is little available data to describe the impact rabbits are currently having on the asset area.

The asset area is also known to be home to populations of foxes, goats and cats. As with rabbits, there is little concrete data available to scale of threat these populations pose this asset. As with invasive plants, the presence of invasive animals like rabbits and foxes in the asset area is recognised. However, there is only limited data available to adequately describe the current scope and scale of pest animal populations for the purposes of effective regional control. The current information and response capacity relies heavily on local activity at a local scale. This approach, while often very successful, tends to preclude centralised management and control at a regional scale. Therefore, the priority of action to address invasive animals is strongly influenced by local scale data derived from local planning instruments and informal community consultation at the local level. On the other hand, knowledge and understanding of the vulnerability of the Mallee landscape to future incursions or outbreaks is available for some species given the current understanding of their biological requirements and the planning and response framework provided by regional scale plans such as the Mallee Invasive Plants and Animals Management Strategy (IPAWS).

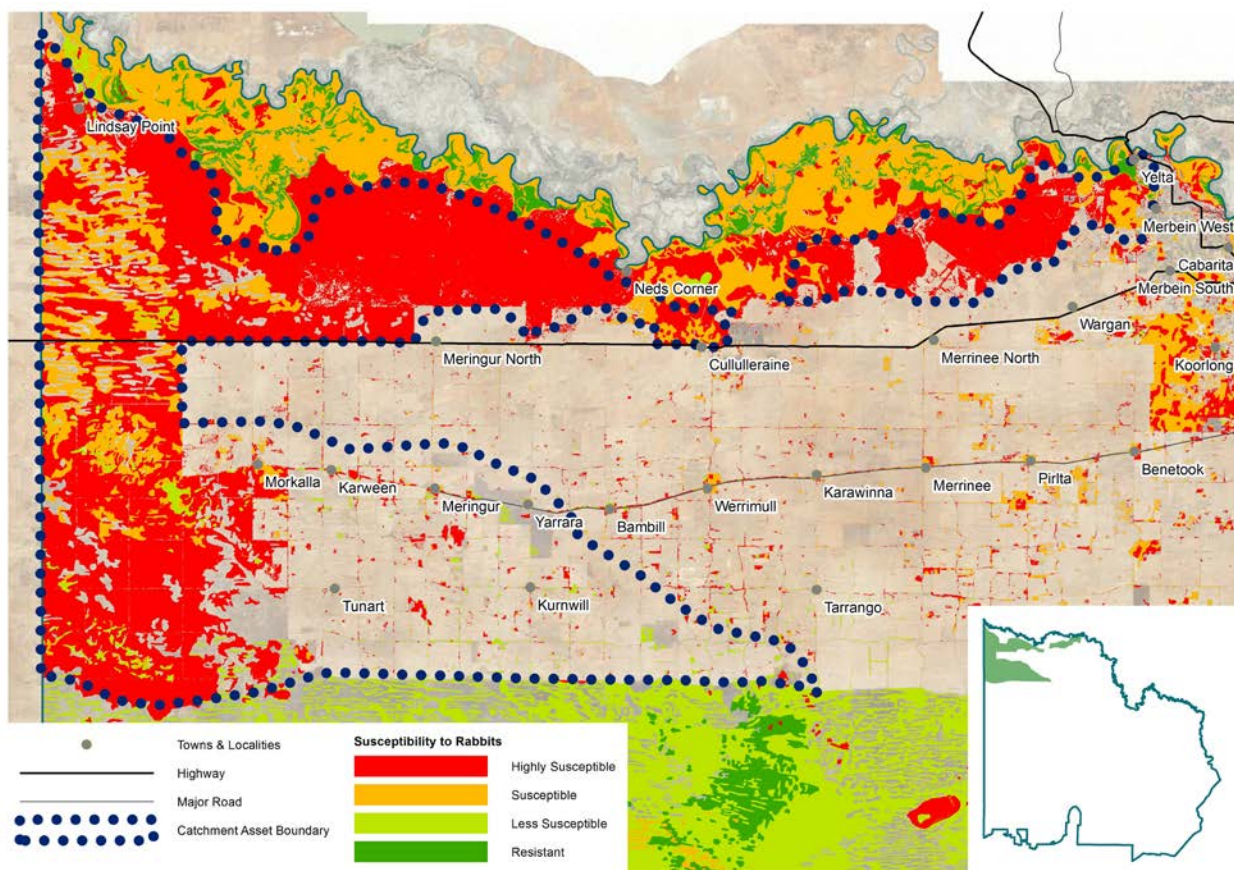
The IPAWS identifies 21 regional assets (based on geographic areas) across the Mallee region. This Catchment Asset area contains three of these geographic assets: Agricultural Land; North West Savannah Woodlands; and the Yarrara, Meringur and Mallanbool Reserves. Of these, only the North West Savannah Woodlands was considered to be a high priority for on-ground action to manage invasive plants and animals. The remaining assets were identified as areas where monitoring for future action and maintaining previous management gains was considered sufficient.

Using this combination of information gathering approaches and the application of a complimentary consultative process, the priority of action for dealing with invasive plants with respect to each Regional Asset has been determined. They are listed in the table below along with the summary of the logic behind the priority determination. They are listed in Table 11 below.

**Table 11: Prospective Priority of Action to address Invasive Animals upon Regional Assets**

Regional Asset	Priority of Action	Summary Logic
Rivers	LOW	To be documented
Wetlands	LOW	To be documented
Threatened Species and Communities	HIGH	To be documented
Terrestrial Habitat	HIGH	To be documented
Soils	HIGH	To be documented
Agricultural Land	HIGH	To be documented
Groundwater	NONE	To be documented
Cultural Heritage	HIGH	To be documented
Community Capacity	NONE	To be documented





**Figure 13: Susceptibility of Remnant Native Vegetation to Rabbits**

## Altered Hydrological Regimes

Modification of the natural flow regimes in our river systems has occurred over time to meet the various needs of navigation, agriculture and urban water use. Flow regulation has resulted in changes in the frequency, magnitude and duration of flows, and the restriction of small to medium flood events. River regulation, including the effect of locks, weirs and dams, has altered wetting and drying phases of many wetlands and ephemeral anabranches, by either permanently inundating the area, or restricting flows. Engineering works, such as the building of levees, have alienated large areas of floodplain which alters flood conveyance and flood storage. These changes have great significance for: fringing and floodplain forest communities; populations of fish, macroinvertebrates, algae, macrophytes; nutrient cycling; water quality; and channel shape and form.

Wetlands across the Mallee region have also been subject to modification of natural flow regimes which poses a threat to all priority wetland units. The flow regime, or hydrology, of a wetland is typically determined by climactic conditions and the inflows and outflows of surface and groundwater. Changes in hydrology affect most aspects of wetland ecology, including nutrient cycling; water quality; wetland shape and form; biodiversity; vegetation health, type and extent; and the composition and size of faunal communities. A wetland's flow regime has three main components: frequency, duration and seasonality of inundation. Any activity that changes one or more of these components will alter the natural hydrological regime of a wetland. Examples of these activities include: changes the flow regime of the wetland's water source; interference with flows in and out of, or even within, the wetland; water disposal to or extraction from the wetland; and modification of wetland depth (which alters evaporation rates and affects inundation duration).

The waterways and wetlands of this Catchment Asset are relatively few in number compared to other parts of the region. However, their hydrology is strongly influenced by the Murray River and anabranch system immediately to the north. The river system has been subject to extensive

modification of hydrological regimes to the influence of weirs and locks and alteration of seasonal flow patterns to benefit irrigated agriculture. Within this Catchment Asset, the hydrology of Lake Cullulleraine has been extensively modified to not only supply water for irrigated agriculture but as a source of water for the Northern Mallee Pipeline which supplies water to dryland properties across the Millewa.

Using this combination of information gathering approaches and the application of a complimentary consultative process, the priority of action for dealing with altered hydrological regimes with respect to each Regional Asset has been determined. They are listed in Table 12 below.

**Table 12: Prospective Priority of Action to address Altered Hydrological Processes**

Regional Asset	Priority of Action	Summary Logic
Rivers	HIGH	To be documented
Wetlands	HIGH	To be documented
Threatened Species and Communities	HIGH	To be documented
Terrestrial Habitat	HIGH	To be documented
Soils	MEDIUM	To be documented
Agricultural Land	MEDIUM	To be documented
Groundwater	NONE	To be documented
Cultural Heritage	HIGH	To be documented
Community Capacity	NONE	To be documented

## Soil Erosion

Soil erosion in the Mallee is primarily confined to two processes: wind erosion and water erosion. Wind erosion is typically a regional scale process whereas water erosion primarily occurs in discrete locations on the sides and banks of some watercourses.

Wind erosion is the process by which soil particles are detached from the land surface and transported by the wind. Wind erosion occurs when the forces exerted by the wind overcome the gravitational and cohesive forces of soil particles on the surface of the ground. Wind erosion degrades the soil, reducing its capacity to sustain biodiversity and to support agricultural production. It can also have significant off-site impacts on infrastructure, air quality and respiratory health.

The movement of soil particles by the wind occurs in three ways, each of which is dependent on the size of the particles in question. The first method is known as creep. Larger particles (like sand) are generally too heavy to be lifted by the wind, so they are rolled along the surface by wind drag or moved by bombardment by other moving particles. The next method is known as saltation and this is when middling sized soil particles (typically 0.1 to 0.5 mm) are lifted by the wind, and then fall back to the ground, so they move in a hopping or bouncing fashion. This abrades the soil surface and as they hit other particles they break into smaller particles. It is these smaller particles (typically less than 0.1 mm) that form the suspended dust that is carried away from the erosion site by the wind and is typical of a Mallee dust event.

The susceptibility of a soil to erosion is dependent on its erodibility; its exposure to erosive winds; and on its moisture content. Soil erodibility refers to the inherent properties of the soil that make it susceptible to movement should the soil be exposed to strong winds (for example when they have



been completely cleared or cultivated). These properties include: surface texture, organic matter content and stability of soil aggregates. The most erodible soil types are those with single grained structure and poor aggregate stability, such soils commonly comprising a large proportion of fine sand particles.

Soil erosion susceptibility in the Mallee can be spatially described due to a recognised relationship between soil type and the terrain. Landform component mapping took advantage of the relationship and served as a basis for predicting soil properties that determine erodibility based on prevailing terrain and soil types. It is an extension of the description and mapping of Mallee land systems in 1963 by Rowan and Downes which provides information about the land, its capabilities and its susceptibilities. The mapping used soil texture as the measure of erodibility and considered the frequency and direction of erodible winds (from south-west to westerly) to be consistent across the study area. The erosion susceptibility map for this Catchment Asset area is presented in Figure 14 below.

Wind erosion susceptibility mapping does not reflect the actual threat (or likelihood) of erosion occurring. Whilst a soil's inherent susceptibility to wind erosion is important, the actual likelihood of erosion occurring also depends on how the land is managed. Land management (such as vegetation cover) and climatic conditions (such as wind strength) play an important role in the occurrence of erosion. Where inappropriate management occurs severe wind erosion can be initiated on soils with low susceptibility and conversely erosion can be minimised on soils with high susceptibility with good management practises (Lorimer, 1985). When predicting the threat of erosion, both the landform component's inherent susceptibility to erode and its current state of management must be considered.

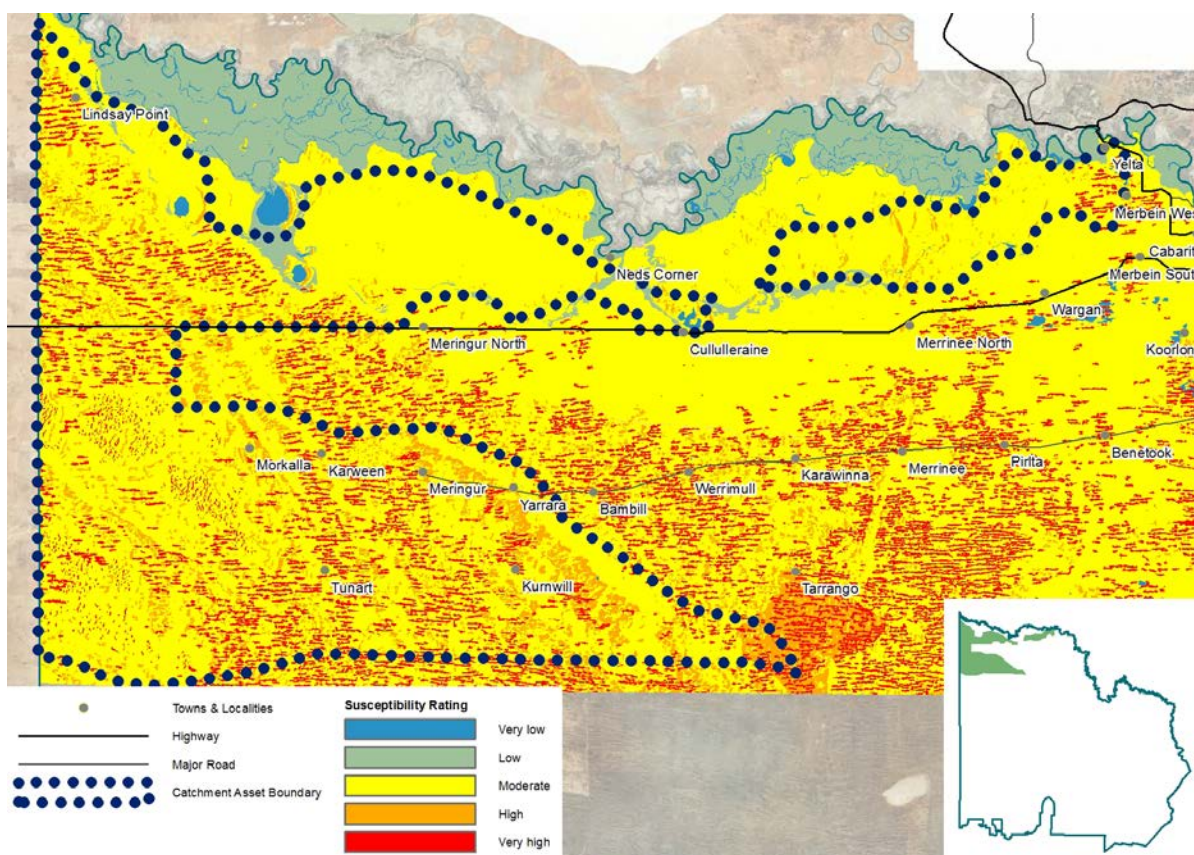
Given the combination of soil types and landforms within this Catchment Asset, the wind erosion susceptibility mapping found that most of the soils in the catchment asset area have only moderate vulnerability to wind erosion. In this circumstance they are not particularly susceptible to wind erosion even in the event that the correct precursors (such as reduced groundcover) for such erosion exist. However, scattered over much of the asset area are landforms such as dune crests that contain relatively lighter and sandier soils which are more susceptible to erosion. These areas of high or very high susceptibility soils account for almost 39,000 hectares or approximately 19% of the catchment asset. A little under half of these susceptible soils are found on private (and therefore agricultural) land that is predominantly employed in seasonal cropping systems. This combination of susceptible soils and agricultural practises suggests that these areas may require a greater level of care and management input in order to maintain appropriate soil management regimes.

Using this combination of information gathering approaches and the application of a complimentary consultative process, the priority of action for dealing with soil erosion with respect to each Regional Asset has been determined. They are listed in Table 13 below.

**Table 13: Prospective Priority of Action to address Soil Erosion**

Regional Asset	Priority of Action	Summary Logic
Rivers	<b>MEDIUM</b>	<b>To be documented</b>
Wetlands	<b>HIGH</b>	<b>To be documented</b>
Threatened Species and Communities	<b>HIGH</b>	<b>To be documented</b>
Terrestrial Habitat	<b>HIGH</b>	<b>To be documented</b>
Soils	<b>HIGH</b>	<b>To be documented</b>
Agricultural Land	<b>HIGH</b>	<b>To be documented</b>
Groundwater	<b>NONE</b>	<b>To be documented</b>

Cultural Heritage	<b>HIGH</b>	<b>To be documented</b>
Community Capacity	<b>NONE</b>	<b>To be documented</b>



**Figure 14: Wind Erosion Susceptibility**

## Inappropriate Water Use Practices

Inappropriate water use practices in agricultural activities in both the irrigation and dryland zones have been demonstrated to result in excessive volumes of deep drainage past the root zone of crops and pasture and therefore contribute to the raising of local and regional water tables.

Approximately 40% (about 88,000 hectares) of the asset area is given over to agricultural activities. Only 2% of this area is given over to irrigated agriculture. There is insufficient information to determine the extent to which inappropriate water use practises remain in place.

Using this combination of information gathering approaches and the application of a complimentary consultative process, the priority of action for dealing with inappropriate water use practices with respect to each Regional Asset has been determined. They are listed in Table 14 below.

**Table 14: Prospective Priority of Action to address Inappropriate Water Use Practices**

Regional Asset	Priority of Action	Summary Logic
Rivers	<b>MEDIUM</b>	<b>To be documented</b>
Wetlands	<b>MEDIUM</b>	<b>To be documented</b>

Threatened Species and Communities	<b>MEDIUM</b>	<b>To be documented</b>
Terrestrial Habitat	<b>MEDIUM</b>	<b>To be documented</b>
Soils	<b>MEDIUM</b>	<b>To be documented</b>
Agricultural Land	<b>MEDIUM</b>	<b>To be documented</b>
Groundwater	<b>NONE</b>	<b>To be documented</b>
Cultural Heritage	<b>HIGH</b>	<b>To be documented</b>
Community Capacity	<b>NONE</b>	<b>To be documented</b>

## Recreational Pressures

Recreational pressure can contribute to impacts including littering, track proliferation, fishing pressures, firewood collection, soil compaction and site erosion. The nature of the impacts is typically localised around the particular site and is highly dependent on the accessibility, popularity and sensitivity of the site along with the level of management that the location receives.

Given its isolation from the Murray River and the extensive area of private land, this catchment asset is much less popular in terms of recreational activities than its northern neighbour. However, the Murray Sunset National Park in the west of the asset area is a popular area for day use recreation and some remote camping. It also plays host to an extensive track network (notably the Border Track) that provides extensive links to other parts of the National Park to the south and east. The State of the parks survey identifies a range of potential impacts arising from this recreational use. The scope, scale and extent of the impacts that results from this recreational pressure has not been quantified.

Using this combination of information gathering approaches and the application of a complimentary consultative process, the priority of action for dealing with inappropriate water use practices with respect to each Regional Asset has been determined. They are listed in Table 15 below.

**Table 15: Prospective Priority of Action to address Recreational Pressures**

Regional Asset	Priority of Action	Summary Logic
Rivers	<b>MEDIUM</b>	<b>To be documented</b>
Wetlands	<b>MEDIUM</b>	<b>To be documented</b>
Threatened Species and Communities	<b>MEDIUM</b>	<b>To be documented</b>
Terrestrial Habitat	<b>MEDIUM</b>	<b>To be documented</b>
Soils	<b>NONE</b>	<b>To be documented</b>
Agricultural Land	<b>NONE</b>	<b>To be documented</b>
Groundwater	<b>NONE</b>	<b>To be documented</b>
Cultural Heritage	<b>HIGH</b>	<b>To be documented</b>
Community Capacity	<b>NONE</b>	<b>To be documented</b>

## Land Use Change

Land use change as a threatening process in this context is considered to be the change of land management or use practices from either a steady state or from accepted best practice management system. Examples include the removal of native vegetation, conversion of dryland property to irrigation development (or the reverse), change from no-till cropping to traditional fallow techniques, conversion from perennial pasture to cropping (or the reverse)

There is insufficient quality and quantity of data available to adequately describe the nature and level of impact resulting from this threatening process on this catchment asset at this time.

Using this combination of information gathering approaches and the application of a complimentary consultative process, the priority of action for dealing with land use change with respect to each Regional Asset has been determined. They are listed in Table 16 below.

**Table 16: Prospective Priority of Action to address Land Use Change**

Regional Asset	Priority of Action	Summary Logic
Rivers	HIGH	To be documented
Wetlands	HIGH	To be documented
Threatened Species and Communities	HIGH	To be documented
Terrestrial Habitat	HIGH	To be documented
Soils	HIGH	To be documented
Agricultural Land	HIGH	To be documented
Groundwater	NONE	To be documented
Cultural Heritage	HIGH	To be documented
Community Capacity	NONE	To be documented

## Direct Off-site Interactions

Direct off-site interactions are the direct physical impacts from land management activities on neighbouring off-site assets such as areas of remnant native vegetation or wetlands. Such interactions may include chemical spray drift; parking or storage of machinery and equipment; or incremental drift of cultivation into the asset.

There is insufficient quality and quantity of data available to adequately describe the nature and level of impact resulting from this threatening process on this catchment asset at this time.

Using this combination of information gathering approaches and the application of a complimentary consultative process, the priority of action for dealing with direct off-site interactions with respect to each Regional Asset has been determined. They are listed Table 17 below.

**Table 17: Prospective Priority of Action to address Direct Off-site Interactions**

Regional Asset	Priority of Action	Summary Logic
Rivers	LOW	To be documented
Wetlands	LOW	To be documented
Threatened Species and Communities	LOW	To be documented

Terrestrial Habitat	LOW	To be documented
Soils	LOW	To be documented
Agricultural Land	LOW	To be documented
Groundwater	NONE	To be documented
Cultural Heritage	LOW	To be documented
Community Capacity	NONE	To be documented

## Misaligned Community Perceptions

Misaligned community perceptions are community opinions, approaches & values that run counter to the messages & knowledge available about natural resource management AND threaten the success of the wider communities' efforts to enhance their environment. Such perceptions include 'right of unfettered access' that results in removal of traffic management infrastructure installed near river banks; and 'we are doing no harm' where individuals are not aware of the cumulative and incremental harm of some of their actions (along with those of the rest of the community) when they are making use of our assets

There is insufficient quality and quantity of data available to adequately describe the nature and level of impact resulting from this threatening process on this catchment asset at this time. However, there is a range of anecdotal information from a range of sources that suggest the threat is present and ongoing.

Using this combination of information gathering approaches and the application of a complimentary consultative process, the priority of action for dealing with misaligned community perceptions with respect to each Regional Asset has been determined. They are listed in Table 18 below.

**Table 18: Prospective Priority of Action to address Misaligned Community Perceptions**

Regional Asset	Priority of Action	Summary Logic
Rivers	MEDIUM	To be documented
Wetlands	MEDIUM	To be documented
Threatened Species and Communities	MEDIUM	To be documented
Terrestrial Habitat	MEDIUM	To be documented
Soils	MEDIUM	To be documented
Agricultural Land	MEDIUM	To be documented
Groundwater	NONE	To be documented
Cultural Heritage	MEDIUM	To be documented
Community Capacity	MEDIUM	To be documented

## Inappropriate Fire Regimes

Fire is an ongoing challenge for land managers and communities alike. Fire is also a major force determining the structure, function and sustainability of Australia's ecosystems. A substantial proportion of Australia's unique biota is dependent, to varying degrees, on fire and the variety of fire regimes for its continued existence and development. In this context, inappropriate fire regimes can mean either too little or too much fire

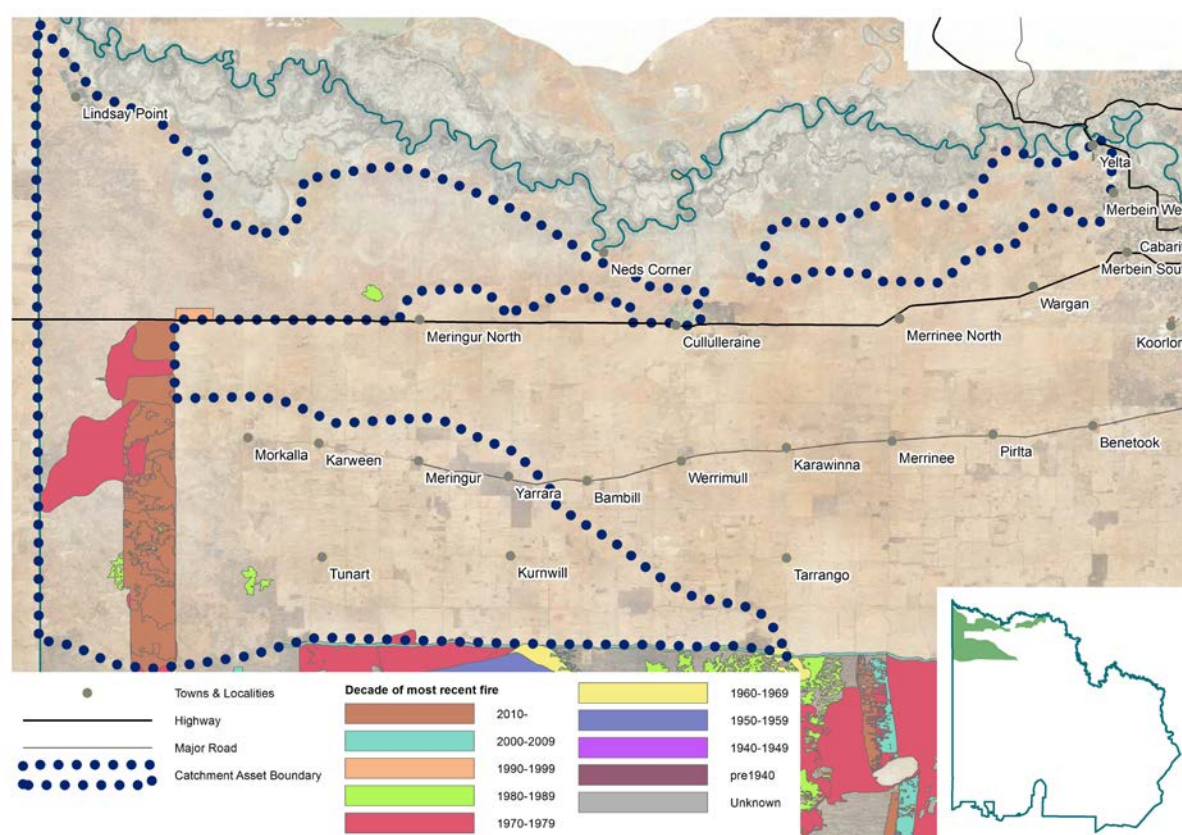


There is insufficient quality and quantity of data available to adequately describe the nature and level of impact resulting from this threatening process on this catchment asset at this time.

Using this combination of information gathering approaches and the application of a complimentary consultative process, the priority of action for dealing with inappropriate fire regimes with respect to each Regional Asset has been determined. They are listed in Table 19 below.

**Table 19: Prospective Priority of Action to address Inappropriate Fire Regimes**

Regional Asset	Priority of Action	Summary Logic
Rivers	NONE	To be documented
Wetlands	NONE	To be documented
Threatened Species and Communities	MEDIUM	To be documented
Terrestrial Habitat	MEDIUM	To be documented
Soils	NONE	To be documented
Agricultural Land	NONE	To be documented
Groundwater	NONE	To be documented
Cultural Heritage	NONE	To be documented
Community Capacity	NONE	To be documented



**Figure 15: Fire History**

## Constrained Regenerative Capacity

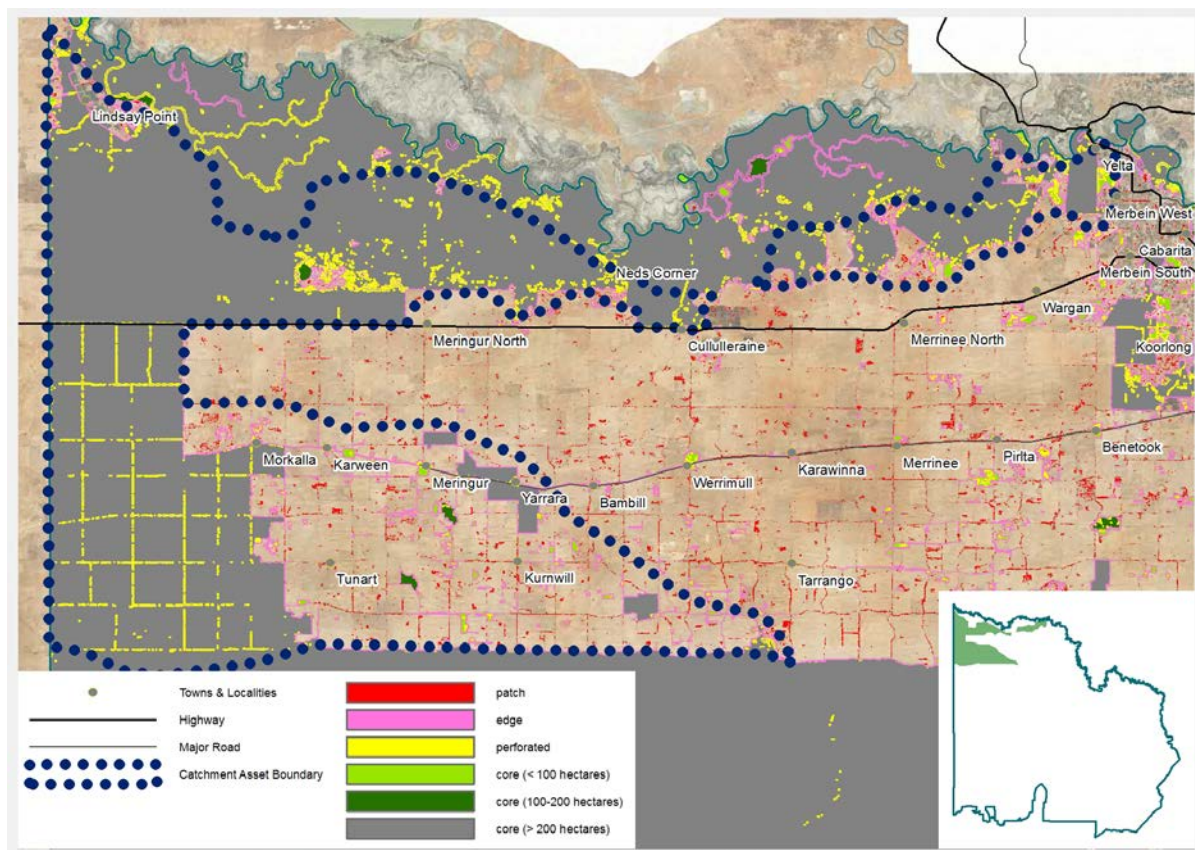
The decline in vegetation cover and habitat complexity within remnant native vegetation can constrain or prevent regeneration which can lead to loss of habitat in the longer term. There are many contributors to this threatening process including weed invasion, excess grazing pressure, and habitat fragmentation. Loss of understorey flora and associated fauna are a possible outcome, also leading to a reduction in the capacity of the remnant to support flora and fauna species or maintain current population numbers, thus impacting on the biodiversity value of the asset.

Habitat fragmentation is one useful indicator of constrained regenerative capacity. A high level of fragmentation will severely limit the capacity of a vegetation community and the ecology it supports to maintain its health and reproductive capacity. It will also hamper our efforts to improve the health and condition of remnant landscapes at a broad scale due to the level of additional resources that each remnant patch would require (such as restoration or revegetation) rather than being able to simply protect the remnant (through fencing and invasive species control) and then rely upon its own internal regenerative resources to bring about an improvement in health and condition.

Modelling of habitat fragmentation using a spatial tool (Vogt, et al. 2007) can demonstrate the level of habitat fragmentation of a landscape. Using a combination of information gathering approaches and the application of a complimentary consultative process, the priority of action for dealing with constrained regenerative capacity with respect to each Regional Asset has been determined. They are listed in Table 20 below.

**Table 20: Prospective Priority of Action to address Constrained Regenerative Capacity**

Regional Asset	Priority of Action	Summary Logic
Rivers	HIGH	To be documented
Wetlands	HIGH	To be documented
Threatened Species and Communities	HIGH	To be documented
Terrestrial Habitat	HIGH	To be documented
Soils	NONE	To be documented
Agricultural Land	NONE	To be documented
Groundwater	NONE	To be documented
Cultural Heritage	NONE	To be documented
Community Capacity	NONE	To be documented



**Figure 16: Habitat Fragmentation**

## Section 4 – References & Appendices

## References

- Department of Agriculture, Fisheries and Forestry. *National Natural Resource Management Capacity Building Framework*. Canberra: Department of Agriculture, Fisheries and Forestry, 2005.
- Gong, W., J. Sinden, M. Braysher, and R. Jones. *The economic impacts of vertebrate pests in Australia*. Canberra: Invasive Animals Cooperative Research Centre, 2009, 59.
- Lorimer, M. S. "Estimating the susceptibility of soil to wind erosion in Victoria." *Journal of Australian Institute for Agricultural Science*, 51 (2), 1985: 122-127.
- Mock, I., and V. Grinter. *Mapping the Mallee's Saline Land. Stage 3: Classifying Mapped Salinity. Final Report*, Irymple: Mallee Catchment Management Authority, 2009.
- Vogt, P., K. Riitters, C. Estreguil, J. Kozak, T. Wade, and J. Wickham. "Mapping spatial patterns with morphological image processing." *Landscape Ecology* 22, 2007: 171-177.



## 1. The Value of Regional Assets within a Catchment Asset

The Regional Asset value indicates the relative importance of the Regional Asset within the Catchment Asset Area. The valuation is determined from a range of indicators, many specific to each of the Regional Assets, that describe the importance of the Asset relative to social, economic and environmental values. One common example of an indicator of asset value is legislative significance which provides an indication of whether part or all of a Regional Asset is of significance at a local, regional, State, National or international level. These indicators were grouped and scored by consensus against agreed criteria and then each Regional Asset within the Catchment Asset was assigned a category that defines the prospective asset value and relative importance of and priority for maintaining or improving the value of the Asset.

Five category levels were identified:

**None** – indicates that the Regional Asset is unknown or not present within the Catchment Asset area.

**Low** – indicates that the Regional Asset is of relatively low status or importance within the Catchment Asset area. It may also indicate that there is insufficient knowledge or data available to define or quantify the asset value and therefore prioritise it with confidence. Further research may be required to rectify this situation.

**Medium** – indicates that the Regional Asset is locally or regionally important but relatively well known or secure at the Catchment Asset scale. This may be due in part to previously successful management interventions. Ongoing monitoring may be required as will some level of intervention (particularly at a local scale) to ensure previous management gains are not lost.

**High** – indicates that the Regional Asset within the Catchment Asset Area is of significance at a regional, State or National scale and that action is likely required over the life of the RCS in order to maintain or improve the value of the Regional Asset within the Catchment Asset Area.

**Very High** - indicates that the Regional Asset within the Catchment Asset Area is of significance at a National or international scale and that action is likely required over the life of the RCS in order to maintain or improve the value of the Regional Asset within the Catchment Asset Area.

## 2. Categorising Threatening Processes

The categorisation of the threatening processes in order to prioritise management actions was based on the current scope and scale of the impacts arising from the threatening process along with consideration of potential future impact of the threatening process. The categorisation was based on consensus against agreed criteria. Each threatening process acting upon each Regional Asset was assigned a category that defines the prospective priority of action to address that threatening process.

Four category levels were identified:

**None** – indicates that either the threatening process, or the regional asset itself, is unknown or not present within the catchment Asset area.

**Low** – indicates that, while the threatening process is known to be present, it is at a low level or the Regional Asset itself is not overly susceptible to or impacted by the threat. It may also indicate that there is insufficient knowledge or data available to define or quantify the interaction between the asset and the threatening process and therefore prioritise it with confidence. Further research may be required to rectify this situation.

**Medium** – indicates that the threatening process is real but that the Regional Asset is not under immediate threat at the Catchment Asset scale. This may be due to previously successful interventions. Ongoing monitoring will be required as will some level of intervention (particularly at a local scale) to ensure previous management gains are not lost.

**High** – indicates that: there is a high level of potential harm to the Asset as a result of the threatening process; there are a variety of management actions available that are known to be successful at reducing harm and which are generally supported by land managers; and that action is required over the life of the RCS in order to prevent further impact as a result of the threatening process.

### 3. Management Plans Relevant to this Catchment Asset

*Table 21: Management Plans Relevant to this Catchment Asset*

Name	Type	Author/Owner	Year
North West Region Mildura Fire District Fire Protection Plan	Management Plan	Department of Sustainability & Environment	2008
Victorian Mallee Irrigation Area Land and Water Management Plan (Draft)	Management Plan	Mallee Catchment Management Authority	2011
Mallee Parks Management Plan	Management Plan	Parks Victoria	1996
Northern Region Sustainable Water Strategy	Strategy	Department of Sustainability & Environment	2009
Mallee River Health Strategy 2005	Strategy	Mallee Catchment Management Authority	2006
Mallee Wetland Strategy 2006-2011	Strategy	Mallee Catchment Management Authority	2006
Mildura Rural City Council Significant Linkages Strategy 2007	Strategy	Mildura Rural City Council	2007
Mallee Invasive Plants and Animals Management Strategy	Strategy	Mallee Catchment Management Authority	2011
Millewa Carwarp Landcare Group Action Plan 2012-2017	Action Plan	Millewa Carwarp Landcare Group	2012
National Recovery Plan for Buloke Woodlands of the Riverina and Murray Darling Depression Bioregions	National Recovery Plan	Department of Sustainability & Environment (Victoria)	2011
National Recovery Plan for the Yellow Swainson-pea <i>Swainsona pyrophila</i>	National Recovery Plan	Department of Sustainability & Environment (Victoria)	2010
National Recovery Plan for the Regent Parrot (eastern subspecies) <i>Polytelis anthopeplus monarchoides</i>	National Recovery Plan	Department of Sustainability & Environment (Victoria)	2011
Flora & Fauna Guarantee Action Statement Placidid (Giles) <i>Planigale planigale gilesi</i>	Action Statement	Department of Sustainability & Environment (Victoria)	2003
Flora & Fauna Guarantee Action Statement White-bellied Sea-eagle <i>Haliaeetus leucogaster</i>	Action Statement	Department of Sustainability & Environment (Victoria)	2003
Flora & Fauna Guarantee Action Statement White-browed Treecreeper <i>Climacteris affinis</i>	Action Statement	Department of Sustainability & Environment (Victoria)	2003
Flora & Fauna Guarantee Action Statement Bush Stone-Curlew <i>Burhinus grallarius</i>	Action Statement	Department of Sustainability & Environment (Victoria)	2004

Flora & Fauna Guarantee Action Statement Grey Falcon <i>Falco hypoleucos</i>	Action Statement	Department of Sustainability & Environment (Victoria)	2003
Flora & Fauna Guarantee Action Statement Major Mitchell's Cockatoo <i>Cacatua leadbeateri</i>	Action Statement	Department of Sustainability & Environment (Victoria)	2004
Flora & Fauna Guarantee Action Statement Hooded Scaly-foot <i>Pygopus nigriceps</i>	Action Statement	Department of Sustainability & Environment (Victoria)	2004
Flora & Fauna Guarantee Action Statement Brolga <i>Grus rubicunda</i>	Action Statement	Department of Sustainability & Environment (Victoria)	2004
Flora & Fauna Guarantee Action Statement Great Egret <i>Ardea alba</i> Intermediate Egret <i>Ardea intermedia</i> Little Egret <i>Egretta garzetta</i>	Action Statement	Department of Sustainability & Environment (Victoria)	2001
Flora & Fauna Guarantee Action Statement Twelve threatened Swainson-peas and Darling-peas (Swainsona species)	Action Statement	Department of Sustainability & Environment (Victoria)	2003
Flora & Fauna Guarantee Action Statement Blue-billed Duck <i>Oxyura australis</i>	Action Statement	Department of Sustainability & Environment (Victoria)	2003
Flora & Fauna Guarantee Action Statement Painted Honeyeater <i>Grantiella picta</i>	Action Statement	Department of Sustainability & Environment (Victoria)	2003

## 4. Management Action Definitions

Management Action Category	Management Action	Definition	Threatening Processes Addressed
On-ground Works	Pest Plant Control	Control and eradication of pest plant species	Invasive Plants; Constrained Regenerative Capacity
	Pest Animal Control	Control and eradication of pest animal species	Invasive Animals; Soil Erosion; Constrained Regenerative Capacity
	Habitat Protection	Habitat protection through exclusion fencing or other physical means	Invasive Animals; Soil Erosion; Recreational Pressure; Land Use Change; Direct Off-Site Interactions; Constrained Regenerative Capacity
	Habitat Restoration	Restoration of degraded terrestrial habitat by planting vegetation	Land & Water Salinisation; Soil Erosion; Recreational Pressure; Direct Off-Site Interactions; Constrained Regenerative Capacity
	Revegetation	Re-creation of terrestrial habitat by planting vegetation (e.g. new wildlife corridor plantings)	Land & Water Salinisation; Soil Erosion; Recreational Pressure; Direct Off-Site Interactions; Constrained Regenerative Capacity
	Environmental Watering	Delivering environmental water to wetlands and floodplains; maintaining appropriate watering regimes	Altered Hydrological Regimes; Constrained Regenerative Capacity
	Soil Erosion Control	Control of soil erosion through engineering works and other structures	Soil Erosion
	Threatened Species Interventions	Interventions to improve outcomes for threatened species and ecological communities	Constrained Regenerative Capacity
	Enhancing Land Management Regimes	Interventions to enhance land management regimes on both public and private land (e.g. water use efficiency on irrigated land; maintaining appropriate soil cover in dryland agriculture; improved management or protection regimes)	Land & Water Salinisation; Soil Erosion; Inappropriate Water Use Practises; Land Use Change; Direct Off-Site Interactions
Capacity Building	Supporting Human Capacity for NRM	Provision of new skills and training in NRM; Delivery of publicity and awareness raising paraphernalia	All
	Supporting Institutional Capacity for NRM	Development and support of regional partnerships between institutions with a stake in NRM	All
	Supporting Social Capacity for NRM	Supporting community organisations that have a stake in NRM by aiding	All

		governance and provision of material	
NRM Planning	Institutional Planning for NRM	Development and implementation of NRM planning by regional institutions. Examples include institutional NRM plans, regional asset plans and sub-strategies	All
	Community Driven Planning for NRM	Development and implementation of NRM planning by community based organisations. Examples include Landcare Group Action Plans.	All
	Landholder Driven Planning for NRM	Development and implementation of NRM planning by landholders. Examples include property management plans and conservation agreements	All
Knowledge Building	Research to improve knowledge	Any research or other work delivered to improve or expand current knowledge or fill knowledge gaps in any NRM topic relevant to regional assets	All
Asset Assessment	Asset condition monitoring and assessment	Monitoring and collection of data concerning indicators of regional asset condition and/or threatening processes impacting on regional assets; Efforts to determine and/or evaluate trends in the condition of assets or the scope and scale of threatening processes impacting on regional assets.	All

## 5. Management Actions from Existing Management Plans

**Table 22: Management Actions from Existing Management Plans**

Instrument	Management Action	Details
North West Region Mildura Fire District Fire Protection Plan	Supporting Institutional Capacity for NRM	Investing in integrated fire management to balance community needs with ecological requirements
	Research to improve knowledge	Determining appropriate ecological fire regimes
Victorian Mallee Irrigation Area Land and Water Management Plan (Draft)	Enhancing Land Management Regimes	improving water use efficiency; modernising infrastructure
	Supporting Human Capacity for NRM	Education and community awareness development on a range of land, water and biodiversity management issues
	Supporting Institutional Capacity for NRM	Maintaining partnerships and communication channels amongst regional and State partners
	Institutional Planning for NRM	Considerable (and diverse) planning and policy development to enhance water trading rules, improve efficiency of water



		use and incorporate environmental watering into the water management process
	Landholder Driven Planning for NRM	Whole farm planning for irrigation properties
	Research to improve knowledge	Various research topics on water use efficiency improvements and the potential impacts of irrigation on biodiversity and land use management
	Asset condition monitoring and assessment	waterway salinity, groundwater and irrigation drainage monitoring
Mallee Parks Management Plan	Pest Plant Control	reducing the impact of pest plants on native species and communities
	Pest Animal Control	reducing the impact of pest animals on native species and communities
	Habitat Protection	the existing diversity of native flora and fauna will be maintained, and a management regime of minimal disturbance adopted. Significant natural and cultural features will be given special protection
	Habitat Restoration	active revegetation in areas of localised extinction and rarity; adopting manipulative fire regimes where they can be demonstrated to be of value to the Parks' environments and ecosystems
	Revegetation	Wildlife corridors between the Parks and other major blocks of public land in the region will be established
	Environmental Watering	Restoring a more natural hydrological regime within all Parks
	Threatened Species Interventions	Manage Flora and Fauna Guarantee listed species and communities according to approved action statements
	Supporting Human Capacity for NRM	Numerous actions to assist visitors to discover, enjoy and appreciate the natural and cultural features of the Mallee Parks, and the value of National Parks and their management
	Supporting Institutional Capacity for NRM	Liaise with local community groups and land holders and, as appropriate, involve them in relevant aspects of planning and managing the Parks
	Research to improve knowledge	Encourage research on Mallee ecosystems, vegetation communities, and significant flora and fauna species
	Asset condition monitoring and assessment	Monitor control and rehabilitation programs
Northern Region Sustainable Water Strategy	Environmental Watering	A range of policies and actions at a regional scale that are intended to support environmental water actions
	Supporting Institutional Capacity for NRM	A range of policies and actions that support institutional partnership arrangements to improve bulk water management for irrigators, consumers and the environment
	Asset condition monitoring and assessment	Water quality and quantity monitoring in surface and groundwater resources; ecological monitoring of rivers and wetlands
Mallee River Health Strategy 2005	Pest Plant Control	Planning, coordination and implementation of priority weed control programs
	Pest Animal Control	Planning, coordination and implementation of priority pest control programs
	Supporting Institutional Capacity for NRM	Partnerships between State and regional organisations to close knowledge gaps and provide for co-ordinated implementation of a range of management plans relevant to this catchment asset
	Supporting Social Capacity for NRM	Community education via schools, Landcare and Waterwatch groups
	Research to improve knowledge	Numerous research topics to improve knowledge of river reaches and their ecological requirements within this catchment asset
Mallee Wetland Strategy 2006-2011	Pest Plant Control	Focus on willows and aquatic weeds
	Pest Animal Control	Focus on rabbits & carp
	Habitat Protection	Identification of priority sites; protection from stock grazing
	Habitat Restoration	Identification of priority sites with works to occur at five of them across the region
	Environmental Watering	Determine appropriate water regimes

	Threatened Species Interventions	Identify three priority species and implement key recommendations from their Action Statements or Recovery Plans as relevant to wetlands
	Supporting Human Capacity for NRM	Raising awareness and improving knowledge of wetland values and threats in the community; improving knowledge of indigenous wetland values
	Institutional Planning for NRM	preparation and implementation of local planning overlays and wetland management plans
	Research to improve knowledge	improve knowledge of wetland values and threats to those values
	Asset condition monitoring and assessment	Determine wetland condition; monitor responses arising from interventions
Mildura Rural City Council Significant Linkages Strategy 2007	Pest Plant Control	There are two identified north south corridors with components within this catchment asset: Neds Corner (N1) and Cullulleraine (N2). These corridors also connect this CA to CA5
	Pest Animal Control	
	Habitat Restoration	
	Revegetation	
	Supporting Human Capacity for NRM	
	Supporting Institutional Capacity for NRM	
	Supporting Social Capacity for NRM	
	Landholder Driven Planning for NRM	
	Asset condition monitoring and assessment	
Mallee Invasive Plants and Animals Management Strategy 2011	Pest Plant Control	prevent new introductions; contain high risk weed species
	Pest Animal Control	prevent new introductions; contain high risk pest animal species
	Supporting Human Capacity for NRM	improve community knowledge and awareness of invasive plants and animals and methods of control
	Supporting Institutional Capacity for NRM	support partnership arrangements between organisations with responsibilities for control and management of invasive plants and animals
	Supporting Social Capacity for NRM	Support community organisations carrying out targeted invasive plant and animal management with information, education, extension, enforcement and the identification of funding opportunities; Actively seek community participation and create partnerships with community groups in all IPA management project and programs
	Research to improve knowledge	Investigate control techniques for Ward's Weed
	Asset condition monitoring and assessment	monitor invasive plants and animals against both past interventions and for future actions;
National Recovery Plan for Buloke Woodlands of the Riverina and Murray Darling Depression Bioregions	Pest Plant Control	Weed management in critical habitat for species likely to significantly alter character of Buloke Woodland
	Habitat Restoration	in planting within degraded remnants; re-introduction of keystone community species
	Supporting Human Capacity for NRM	Raise community awareness of Buloke woodland community; encourage community participation in restoration activities
	Institutional Planning for NRM	prepare and implement management plans for public reserves containing Buloke community
	Landholder Driven Planning for NRM	encourage and support the creation of covenants to protect remnants on private land
	Research to improve knowledge	improve knowledge of ecological requirements
National Recovery Plan for the Yellow Swainson-pea Swainsona pyrophila	Threatened Species Interventions	ex-situ seedbank
	Supporting Human Capacity for NRM	increase community knowledge/support for conservation
	Landholder Driven Planning for NRM	encourage use of covenants or similar to protect populations found on private land

	Research to improve knowledge	
	Asset condition monitoring and assessment	
National Recovery Plan for the Regent Parrot (eastern subspecies) <i>Polytelis anthoepus monarchoides</i>	Revegetation	filling gaps in and expanding width of known flyways
	Threatened Species Interventions	
	Supporting Human Capacity for NRM	Increase community involvement in the eastern Regent Parrot recovery program
	Supporting Institutional Capacity for NRM	
	Institutional Planning for NRM	
	Research to improve knowledge	
	Asset condition monitoring and assessment	
Flora & Fauna Guarantee Action Statement Placidid (Giles) <i>Planigale planigale gilesi</i>	Institutional Planning for NRM	update land management plans to reflect habitat requirements for species
	Research to improve knowledge	
Flora & Fauna Guarantee Action Statement White-bellied Sea-eagle <i>Haliaeetus leucogaster</i>	Habitat Protection	buffers/barriers to protect nest sites from disturbance
	Supporting Human Capacity for NRM	community education
	Institutional Planning for NRM	incorporate suitable habitat into appropriate management plans in order to protect such habitat
	Research to improve knowledge	improve knowledge of ecological requirements/potential habitat/recovery techniques
	Asset condition monitoring and assessment	Species population monitoring; threat status monitoring
Flora & Fauna Guarantee Action Statement White-browed Treecreeper <i>Climacteris affinis</i>	Pest Animal Control	rabbit control in pine-buloke woodlands
	Habitat Restoration	restoration of degraded pine-buloke woodland core species habitat
	Supporting Human Capacity for NRM	training and extension to improve staff and community identification of species
	Research to improve knowledge	improve knowledge of ecological requirements/potential habitat/recovery techniques
Flora & Fauna Guarantee Action Statement Bush Stone-Curlew <i>Burhinus grallarius</i>	Pest Animal Control	Fox control in and near key habitat
	Supporting Human Capacity for NRM	Raise community awareness of species; target golf courses with remnant habitat with specific education and land management material
	Institutional Planning for NRM	Develop or amend planning scheme regulations to protect key habitat areas
	Landholder Driven Planning for NRM	Encourage and support a) fencing of remnant habitat; and/or b) the creation of covenants; to protect species on private land
Flora & Fauna Guarantee Action Statement Grey Falcon <i>Falco hypoleucos</i>	Supporting Human Capacity for NRM	community education
	Research to improve knowledge	Numerous research topics to improve knowledge on species and its requirements
Flora & Fauna Guarantee Action Statement Major Mitchell's Cockatoo <i>Cacatua leadbeateri</i>	Habitat Restoration	conserve and enhance species preferred habitat
	Supporting Human Capacity for NRM	Raise community awareness of species; training and extension to improve staff and community knowledge of species requirements
	Research to improve knowledge	improve knowledge of ecological requirements/potential habitat/recovery techniques
Flora & Fauna Guarantee Action Statement Hooded Scaly-foot <i>Pygopus nigriceps</i>	Research to improve knowledge	improve knowledge of ecological requirements/potential habitat/recovery techniques
	Asset condition monitoring and assessment	targeted searches

Flora & Fauna Guarantee Action Statement Brolga <i>Grus rubicunda</i>	Supporting Human Capacity for NRM	Raise community awareness of species
	Research to improve knowledge	improve knowledge of ecological requirements/potential habitat/recovery techniques
	Asset condition monitoring and assessment	Species population monitoring; threat status monitoring
Flora & Fauna Guarantee Action Statement Great Egret <i>Ardea alba</i> Intermediate Egret <i>Ardea intermedia</i> Little Egret <i>Egretta garzetta</i>	Environmental Watering	Maintain appropriate water regimes in wetlands and creeks systems
	Asset condition monitoring and assessment	Species population monitoring; threat status monitoring
Flora & Fauna Guarantee Action Statement Twelve threatened Swainson-peas and Darling-peas ( <i>Swainsona</i> species)	Pest Plant Control	Control competing weeds in known populations
	Habitat Protection	Exclusion of stock and vehicular access to known habitat/populations
	Supporting Human Capacity for NRM	Raise community awareness of species
	Institutional Planning for NRM	prepare and implement management plans for public reserves containing species
	Landholder Driven Planning for NRM	Encourage and support a) fencing of remnant habitat; and/or b) the creation of covenants; to protect species on private land
	Research to improve knowledge	improve knowledge of ecological requirements/potential habitat/recovery techniques
	Asset condition monitoring and assessment	Species population monitoring; threat status monitoring
Flora & Fauna Guarantee Action Statement Blue-billed Duck <i>Oxyura australis</i>	Pest Animal Control	Fox control in and near key habitat
	Habitat Protection	Exclusion of stock and vehicular access to known habitat/populations; minimise disturbance through wetland closure etc.
	Supporting Human Capacity for NRM	Raise community awareness of species; target golf courses with remnant habitat with specific education and land management material
	Landholder Driven Planning for NRM	Encourage and support a) fencing of remnant habitat; and/or b) the creation of covenants; to protect species on private land
	Research to improve knowledge	improve knowledge of ecological requirements/potential habitat/recovery techniques
	Asset condition monitoring and assessment	Species population monitoring; threat status monitoring
Flora & Fauna Guarantee Action Statement Painted Honeyeater <i>Grantiella picta</i>	Supporting Human Capacity for NRM	awareness raising to improve reporting rates
	Institutional Planning for NRM	update regional planning instrument to reflect species habitat requirements
	Research to improve knowledge	encourage university and other institutions to conduct appropriate ecological research
	Asset condition monitoring and assessment	survey known habitats
Millewa Carwarp Landcare Group Action Plan 2012- 2017	Pest Animal Control	rabbit control
	Supporting Institutional Capacity for NRM	improve group governance; develop group capacity; partnership with TfN
	Supporting Social Capacity for NRM	support for Junior Landcare
	Community Driven Planning for NRM	identify and plan for biodiversity assets within group area

## 6. Prioritising Potential Management Actions

Potential management action categories are prioritised in terms of:

- the value of a regional asset within the catchment asset area;

- the priority to address a threatening process to those values;
- the capacity of the management action to address the threatening process; and
- the level of investment (in both of time and money) required to exercise that capacity.

Individual management actions are grouped and scored by consensus against agreed criteria and then each potential management action group within the Catchment Asset is assigned to a category that defines the prospective priority to the implementation.

Four category levels were identified:

**None** – indicates that either the management action group not contained in management plans relevant to the Catchment Asset area or the targeted threatening processes that it addresses is unknown or not present within the Catchment Asset area.

**Low** – typically indicates either that the targeted threatening processes are of low priority within this Catchment Asset area or the management action category is known to be generally not effective at mitigating the threatening process. It may also indicate that there is insufficient knowledge or data available to define or quantify the effectiveness of the management action to mitigate the threatening process and therefore prioritise it with confidence. Further research may be required to rectify this situation.

**Medium** – typically indicates that the targeted threatening processes are of medium priority within this Catchment Asset area and the management action category is known to be generally effective at mitigating the threatening process and is within the region's capacity to implement over the life of the RCS. It may also indicate that there is some uncertainty with the effectiveness of the potential management action upon a high priority threatening process in terms of either the scale of the threat, the known capacity of the action or the investment required to exercise that capacity.

**High** – indicates that the targeted threatening processes are of high priority within this Catchment Asset area and the management action category is known to be effective at mitigating the threatening process and is within the region's capacity to implement over the life of the RCS and that action is required urgently in order to prevent further impact as a result of the threatening process.

## 7. Management Action Priorities

### Threatening Processes Priority of Action

Table 23 below represents the findings of a group based analysis in June 2013 of the threat level posed by threatening processes upon Regional Assets within this Catchment Asset based on the criteria contained in Appendix 2. *Categorising Threatening Processes*. The bottom row of the table contains a median 'score' for the threat level posed by each of the threatening processes across the Catchment Asset. These 'scores' are the same as those shown in Table 2.

**Table 23: Threatening Process Priority of Action Summary**

	Land & water salinisation	Invasive Plants	Invasive Animals	Altered Hydrological Regimes	Soil Erosion	Inappropriate Water Use Practices	Recreational Pressures	Land Use Change	Direct off-site interactions	Misaligned community perceptions	Inappropriate fire regimes	Constrained regenerative capacity
Rivers	Medium	Low	Low	High	Medium	Medium	Medium	High	Low	Medium	None	High
Wetlands	Medium	High	Low	High	High	Medium	Medium	High	Low	Medium	None	High
Threatened Species	Medium	High	High	High	High	Medium	Medium	High	Low	Medium	Medium	High



Terrestrial Habitat	Medium	High	High	High	High	Medium	Medium	High	Low	Medium	Medium	High
Soils	Medium	High	High	Medium	High	Medium	None	High	Low	Medium	None	None
Agricultural Land	Low	High	High	Medium	High	Medium	None	High	Low	Medium	None	None
Groundwater	None	None	None	None	None	None	None	None	None	None	None	None
Cultural Heritage	None	High	High	High	High	High	High	High	Low	Medium	None	None
Community Capacity	None	None	None	None	None	None	None	None	None	Medium	None	None
ALL REGIONAL ASSETS	Medium	High	High	High	High	Medium	Medium	High	Low	Medium	Medium	High

## Management Action Priority Matrix

The table below represents the findings of an integration and analysis of the following components:

- the threatening processes priority of action table shown above;
- the management actions from existing management plans shown in Table 22;
- knowledge and evidence supporting past successes (or otherwise) of various management actions in the Mallee or in this Catchment Asset area; and
- the likelihood of implemented management actions addressing or mitigating threatening processes over the life of the RCS.

The criteria used to apply a value to each management action against each Regional Asset is contained in Appendix 6. *Prioritising Potential Management Actions*. The far right column of the table contains a median 'score' for each the management action priority across the Catchment Asset. These 'scores' are the same as those shown in Table 3.

**Table 24: Management Action Priority Summary**

Management Action Priority Summary										
	Rivers	Wetlands	Threatened Species	Terrestrial Habitat	Soils	Agricultural Land	Groundwater	Cultural Heritage	Community Capacity	Across All Assets
Pest Plant Control	Medium	High	High	High	High	High	None	High	None	High
Pest Animal Control	Medium	Medium	High	High	High	High	None	High	None	High
Habitat Protection	Medium	Medium	High	High	Medium	Medium	None	High	None	Medium
Habitat Restoration	Medium	Medium	Medium	Medium	Low	Low	None	Medium	None	Medium
Revegetation	Low	Low	Low	Medium	Low	Medium	None	Medium	None	Low
Environmental Watering	High	High	High	High	Medium	Low	None	Medium	None	High
Soil Erosion Control	Medium	Medium	Medium	Medium	High	High	None	High	None	Medium
Threatened Species Interventions	High	High	High	High	None	None	None	None	None	High
Enhancing Land Management Regimes	Medium	Medium	Medium	High	High	High	None	High	None	High

Supporting Human Capacity for NRM	Medium	Medium	Medium	Medium	Medium	Medium	None	Medium	Medium	Medium
Supporting Institutional Capacity for NRM	Medium	Medium	Medium	Medium	Medium	Low	None	Medium	Low	Medium
Supporting Social Capacity for NRM	Low	Low	Low	Low	Medium	Medium	None	Medium	Medium	Low
Institutional Planning for NRM	Medium	Medium	Medium	Medium	Medium	Medium	None	High	Medium	Medium
Community Driven Planning for NRM	Low	Low	Medium	Medium	Medium	Medium	None	Medium	Low	Medium
Landholder Driven Planning for NRM	Low	Medium	Medium	Medium	High	High	None	High	Medium	Medium
Research to improve knowledge	Medium	Medium	Medium	Medium	Medium	Medium	None	High	Medium	Medium
Asset condition monitoring and assessment	Low	Medium	Medium	High	Medium	Medium	None	High	Low	Medium

Therefore, the highest priority management actions within this Catchment Asset over the life of the Regional Catchment Strategy should be:

- Pest Plant Control;
- Pest Animal Control;
- Environmental Watering;
- Threatened Species Interventions; **and**
- Enhancing Land Management Regimes

Implementation of these actions should provide the greatest impact on the mitigation of the most concerning threatening processes within this Catchment Asset and make a significant contribution to the achievement of the expected outcomes of the Mallee Regional Catchment Strategy.

Mallee Catchment  
Management Authority  
[www.malleecma.vic.gov.au](http://www.malleecma.vic.gov.au)  
PO Box 5017 Mildura 3502  
Telephone 03 5051 4377  
Facsimile 03 5051 4379