

Fact Sheet

Regional Salinity Impact Zones

Introduction

The Victorian Mallee is divided into discrete salinity impact zones based on an extensive assessment of the hydrogeological characteristics of the region. The zones indicate the relative potential for irrigation water to displace naturally saline regional groundwater into the Murray River.

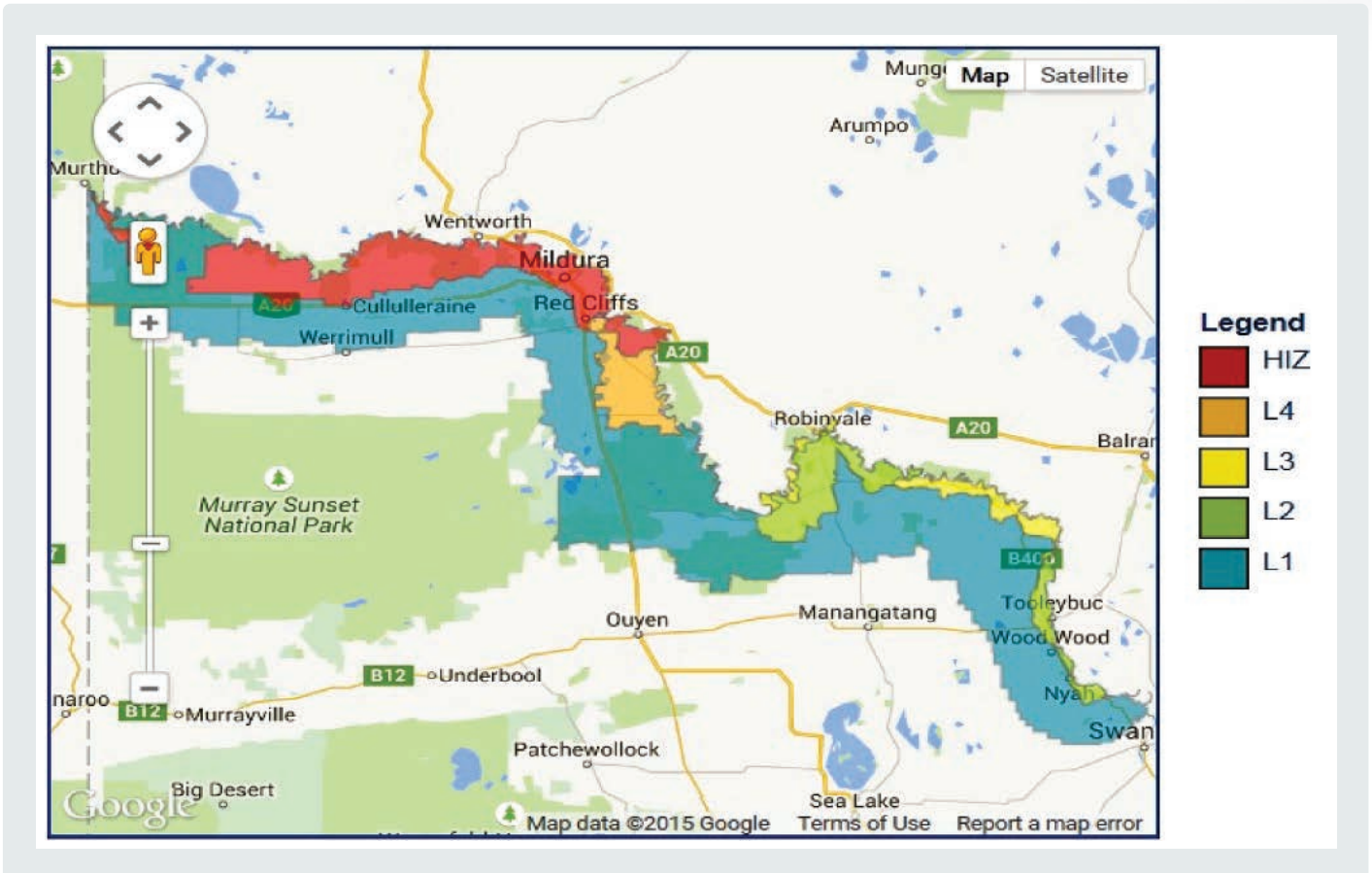
Salinity Impact Zones

Those areas where irrigation has a high salinity impact on the river are identified within the High Impact Zones (HIZ) and those with a low impact are identified within Low Impact Zones (LIZ). The LIZ has been further sub-divided into four zones; L1, L2, L3 and L4, with L1 representing the lowest salinity impact, grading up to L4. A map of the zones is at <https://www.lmw.vic.gov.au/irrigation-services/salinity-zone-mapping/>

Salinity offset charges are proportional to the salinity impact in each zone. Further information on the salinity zoning scheme and charge amounts can be obtained from the relevant Water Corporation, or from the Policies for Managing Water-Use Licences in Salinity Impact Zones <https://www.waterregister.vic.gov.au/water-entitlements/about-entitlements/water-use-licences>

Continued...

For those irrigators wishing to develop in the HIZ, AUL can only be obtained by transferring it from a fellow irrigator who is situated in the HIZ. For those irrigators wishing to develop in the LIZ, AUL can be obtained (by buying it) from a fellow irrigator who is situated in the same zone, or a zone that has a higher impact, or from the Water Corporation by paying the salinity offset charges to the Water Corporation.



Map 1 | Salinity Impact Zones